

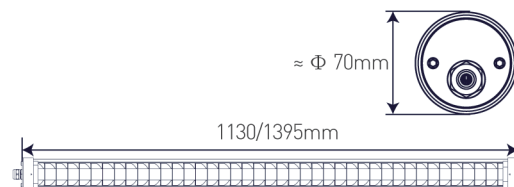
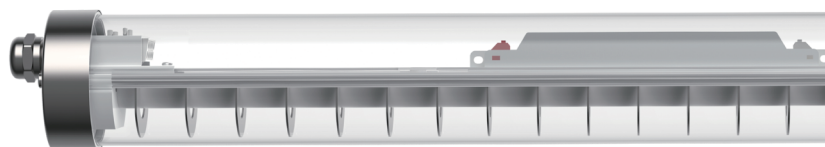
ARC VERSION Tubular-Ti70LP

<https://www.ervan.cn>

The specially designed optical diffuser with longitudinal louvre slats perfectly conceal the unnecessary light, while producing an agreeable diffuse light. Thanks to this unique optical mechanism, Ti70LP offers a perfect compromise between design and lighting comfort. It subtly illuminates every corner of spaces requiring high lighting levels with low glare.

Application:

Public facilities: media libraries, theatres, bars, restaurants and hotels, entrance halls, conference rooms or showrooms, businesses, schools, stores and hospitals...



Mechanical Characteristics

Certification	CE / Rohs / Dmark
Ingress protection(IP)	IP65
Impact resistance(IK)	IK10
Ambient temperature	-20~40°C
Protective class	Class I
Glow wire	850°C
Profile	Extruded PC/Aluminium
End cap	Stainless steel 304
Cable entry	Nickel-coated brass cable gland
Weight(Net)	1130mm-1.62KG / 1395mm-1.88KG
Installation	Ceiling mounted Suspension Wall Mounted

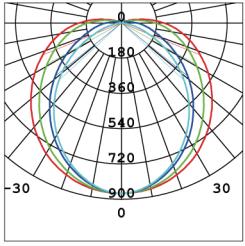
Electrical Characteristics

Wiring	3/5 wires; 3/5 wires through optional				
Power	1130mm	1395mm			
	36W	48W			
Mains voltage	AC220~240V; DC 180-264V 50/60Hz				
Power factor	≥0.9				
THD	< 20%				
Flicker factor	< 1%				
SVM	< 0.4				
Pst	< 1				
Function	0-10V,DALI				
Circuit breakers		B10	B16	C10	C16
	36W	20	26	33	53
	48W	11	18	19	31
Linkable qty (230VAC)	20 (36W) / 11 (48W)				

Photometrical Characteristics

CCT	3000 / 4000 / 5000 / 6500K			
CRI	Ra>80/Ra>90 optional			
Luminous flux		Silver	Golden	Black
	1130mm	5220lm	4500lm	3780lm
	1395mm	6960lm	6000lm	5040lm
Luminous efficacy		145lm/w	125lm/w	105lm/w
SDCM	3			
Beam Angle	95°*135°			
Service life	L80/B10 104000h at +25°C			
Photobiological safety	RG0			

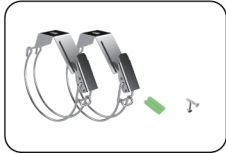
Optics



Accessories

Material

Description



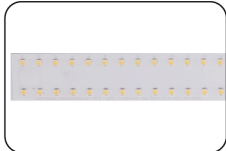
Quick fit bracket, SS304



Suspension kit



LED driver



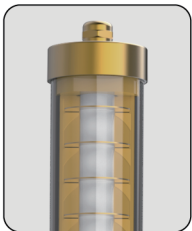
LED PCB board



Silver



Black



Golden