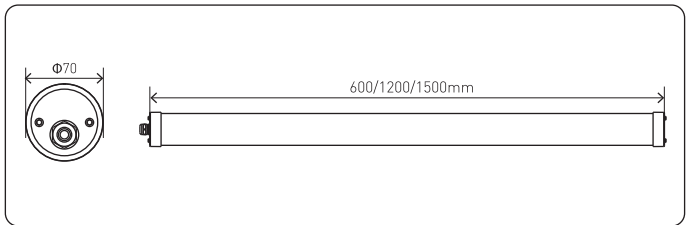
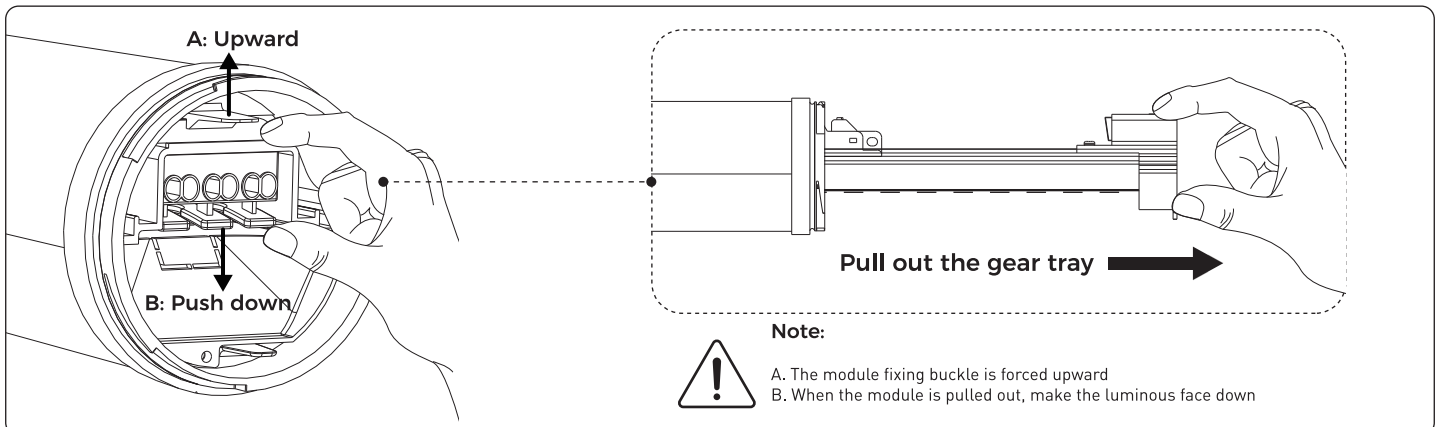
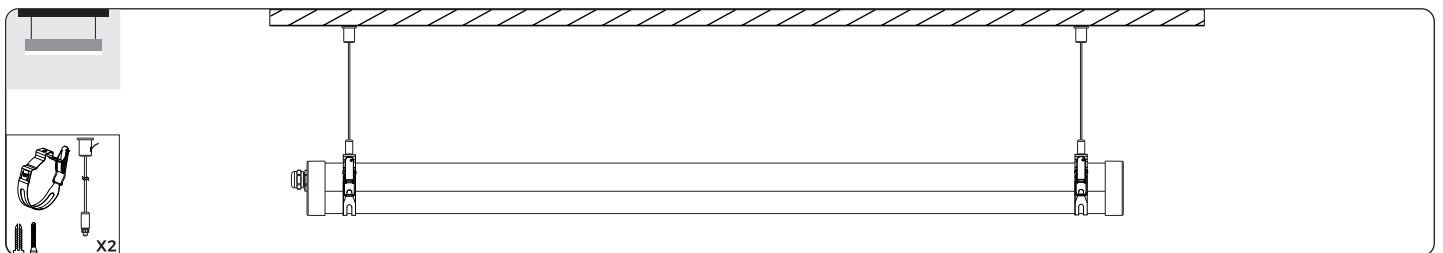
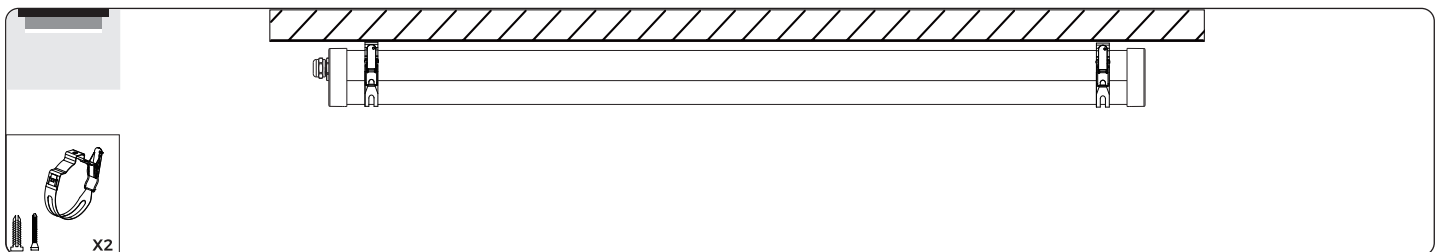
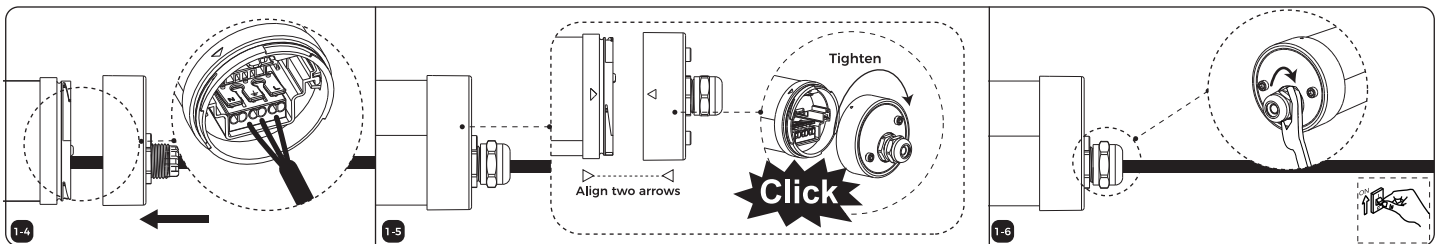
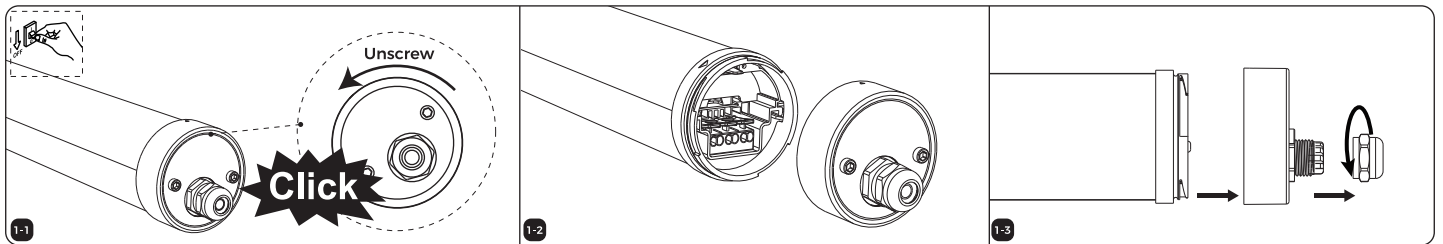


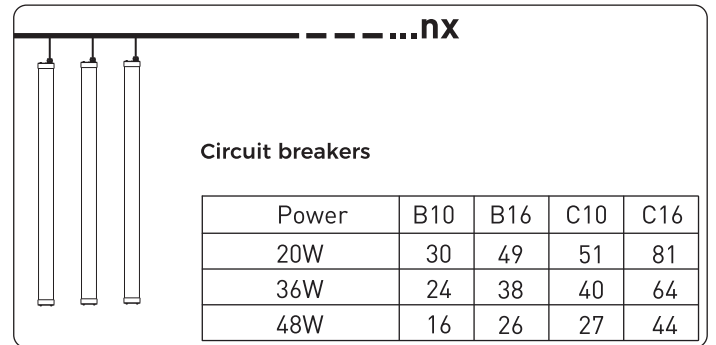
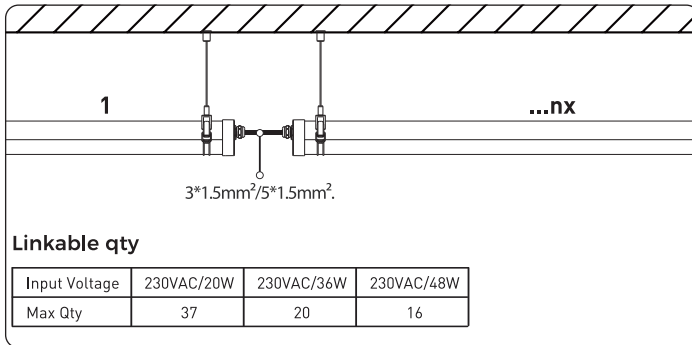
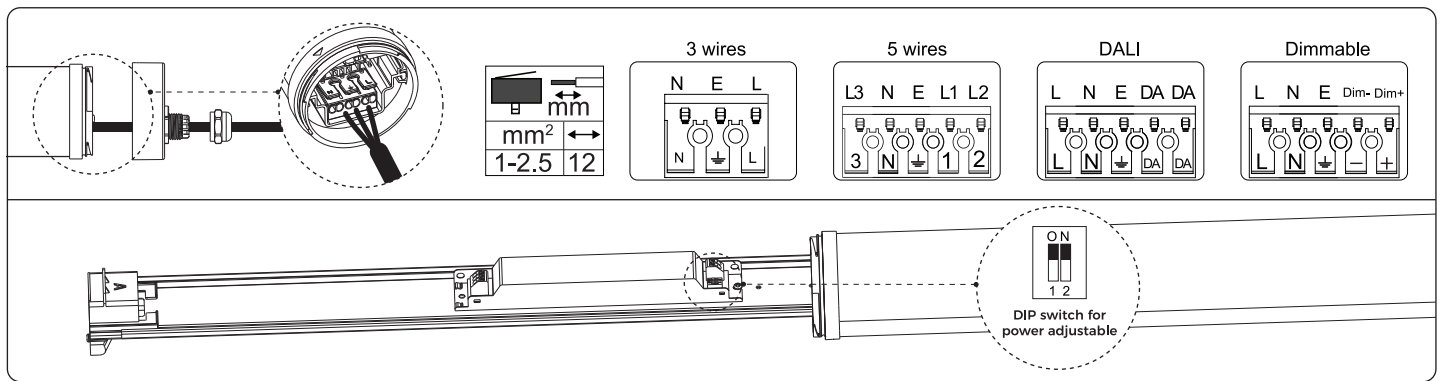
# LED TUBULAR



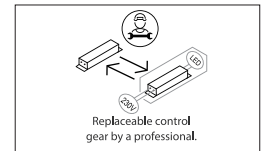
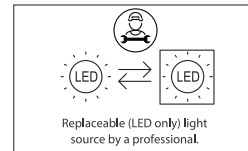
## General Safety Information

- Installation, commissioning and maintenance only by qualified electrician.
- Electric connection must be appropriate according to all applicable standards and other national and international safety and accident prevention regulations.
- is accepted for damages resulting from improper use.
- Never perform any work on the luminaire with voltage applied.
- Danger to life due to electric shock!
- Damaged luminaires must not be operated.
- Observe and retain safety instructions and mounting instructions
- Use genuine parts only for repair.





CCT	EET
4000/5000K	B
3000/6500K	C



This product contains a light source of energy efficiency class <B>. [≤40W(4000K, 5000K)]

This product contains a light source of energy efficiency class <C>. [>40W / ≤40W(3000K, 6500K)]

## Replace method:

A: Unscrew the covers at both ends.

B: Release the screw at the end cap.

C: After the replacement is completed, reinstall it according to the original disassembly method.

