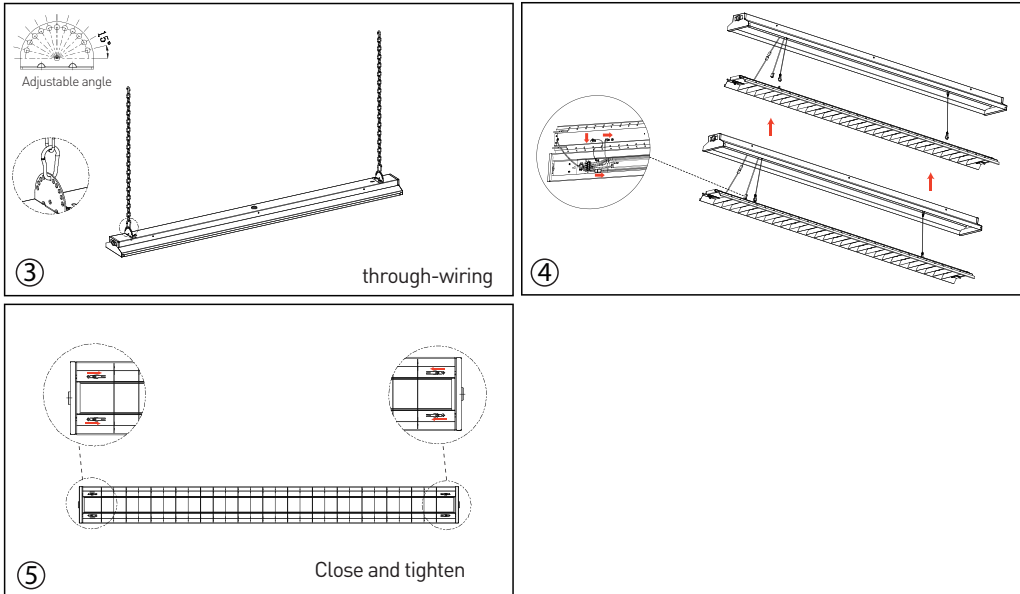
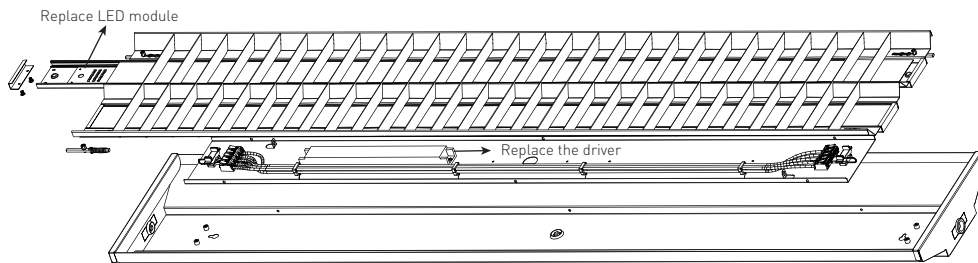


Suspending

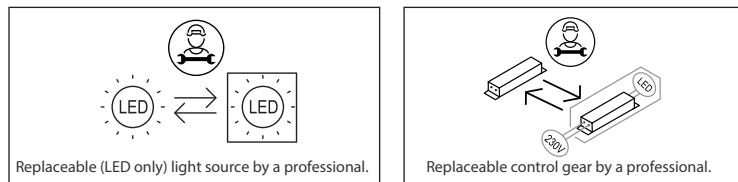


LED module replacement instruction



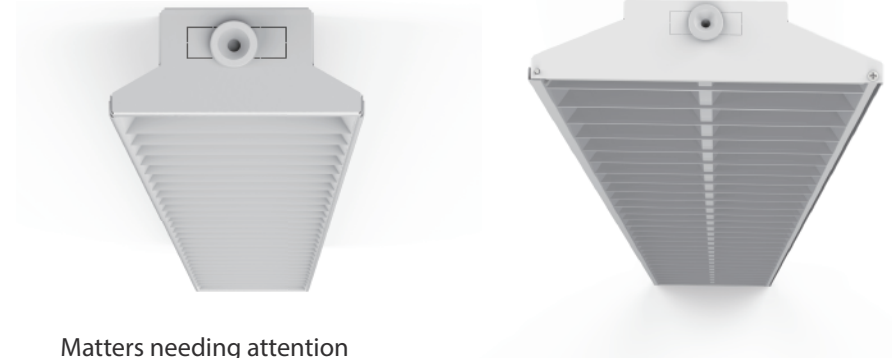
Replace method:

- A: Use a tool to remove the screws at both ends of the lamp set;
- B: Remove the guard coil connected in the center;
- C: Take out the lamp group and aluminum plate to replace the LED lamp group;
- D: After the installation is complete, install it again according to the original disassembly metho.



This product contains a light source of energy efficiency class .(4000K/5000K)
This product contains a light source of energy efficiency class <C>.(3000K/6500K)

Indoor LED Sports Luminaire



Matters needing attention

Before installing the lighting fixtures, please read this instruction manual carefully.

The lighting fixtures should be installed, connected and tested by a certified installer based on the local regulations.

Lamps should always be installed or replaced with care.

Please check the local voltage in accordance with the product requirements before using the product.

Relamping only can be done when the power is off and the lamp is completely cooled down.

When a lamp is to be cleaned, make the power off and let it cool down completely. Clean the fixture with a soft cloth and a standard PH neutral detergent. Stainless steel finishing should be maintained regularly.

Misuse of, or changes to the fixture shall nullify the guarantee.

Don't cover the fixtures with flammable materials.

Exclusively replaced by the manufacturer or his service agent or the similar qualified person in order to avoid a hazard.

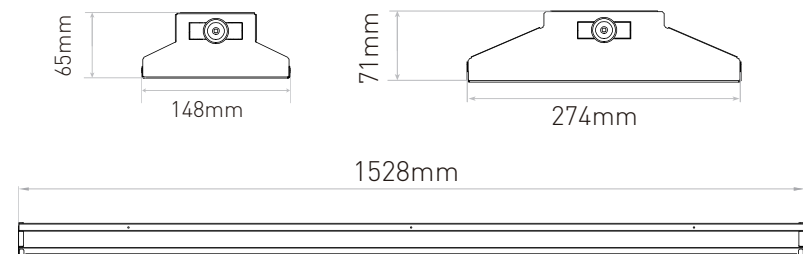
Temperature Characteristics T-ambient 25 °

Temperature	
Operating	-20~+40 °C
Storage	-40~+85 °C

Electrical Characteristics

Input Voltage:	
EU:AC220~240V	50/60Hz
PF:≥0.90	THD<20%
Power Efficiency:≥0.92	

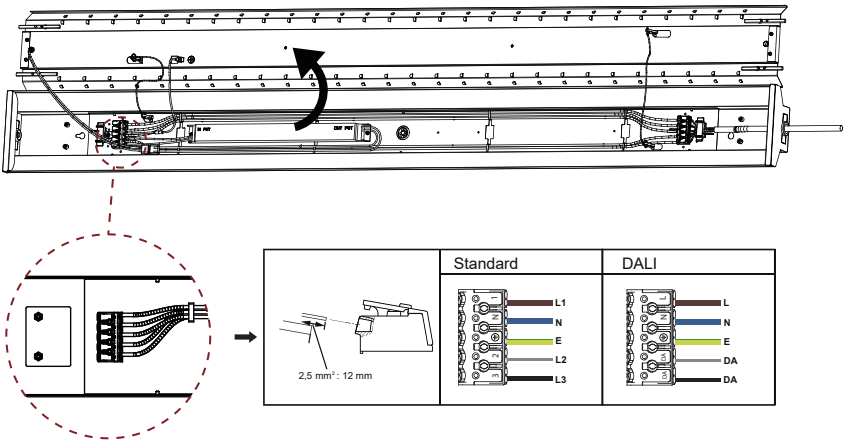
Product Dimension



OPERATION AND CONNECTION

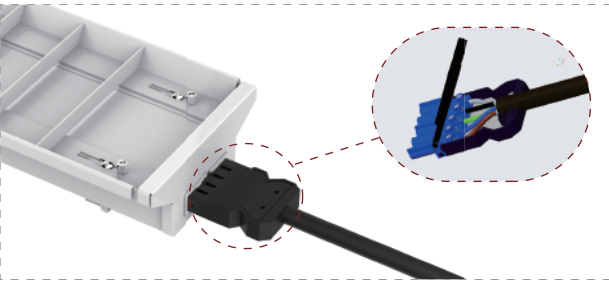
Option 1

5 pole push-in terminal block through-wiring



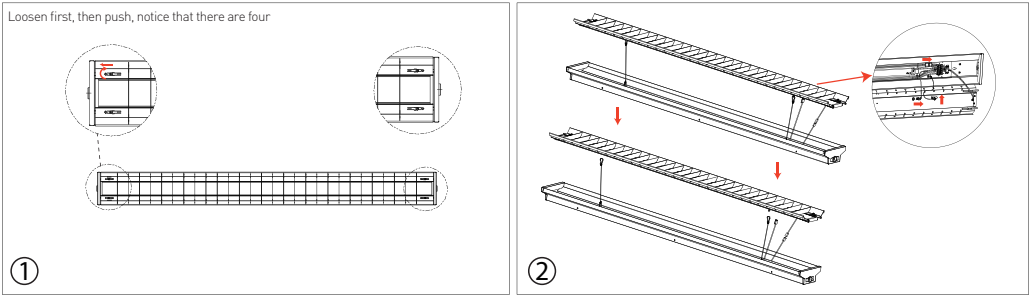
Option 2

Wieland plug (available on request)

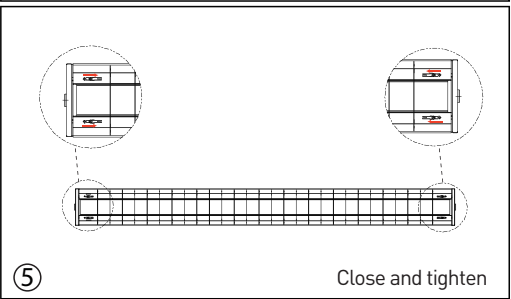
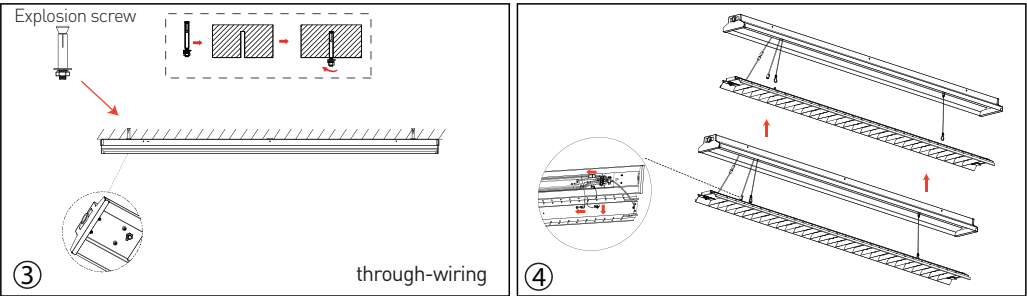


Installation

Loosen first, then push, notice that there are four



Surface installation



Wall mount

