

---

# Tubular LED Luminaire Manual

---



## Matters needing attention

Before installing the lighting fixtures, please read this instruction manual carefully.

The lighting fixtures should be installed, connected and tested by a certified installer based on the local regulations.

Lamps should always be installed or replaced with care.

Please check the local voltage in accordance with the product requirements before using the product.

Relamping only can be done when the power is off and the lamp is completely cooled down.

When a lamp is to be cleaned, make the power off and let it cool down completely. Clean the fixture with a soft cloth and a standard PH neutral detergent. Stainless steel finishing should be maintained regularly.

Misuse of, or changes to the fixture shall nullify the guarantee.

Don't cover the fixtures with flammable materials.

Exclusively replaced by the manufacturer or his service agent or the similar qualified person in order to avoid a hazard.

---

## Temperature Characteristics T-ambient 25°C

### Temperature

Operating -20~+40 °C

Storage -40~+85 °C

---

## Electrical Characteristics

### Input Voltage:

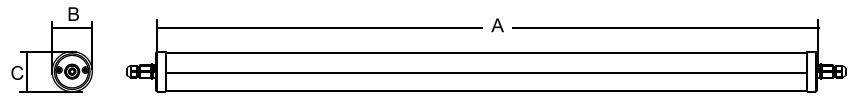
US: AC 100-277V 50/60Hz

EU: AC 220-240V 50/60Hz

PF: ≥0.90 THD < 20%

Power Efficiency: ≥0.87

# 1.Product Dimension



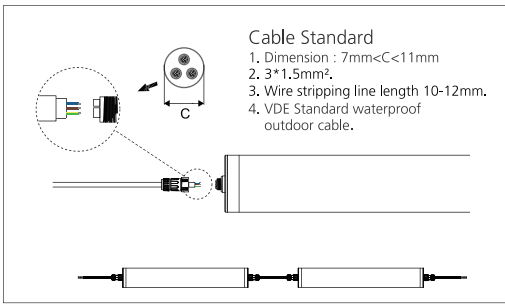
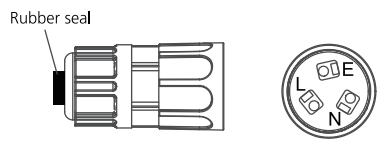
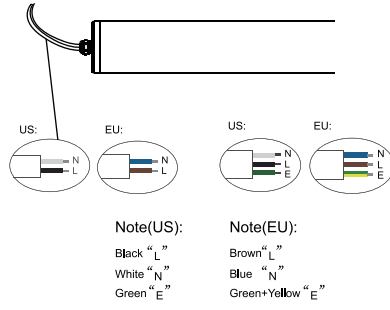
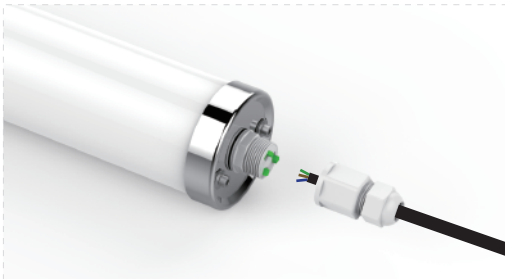
Size A	Size B(mm)	Size C(mm)
2FT(642mm)	74	74
4FT(1242mm)	74	74
5FT(1542mm)	74	74

# 2.Installation

■ Standard



■ Linkable 1



Input Voltage	Length (mm)	Max Qty	Size C (mm)
100VAC/20W	600	17	optional
100VAC/36W	1200	9	optional
100VAC/48W	1500	7	optional

Input Voltage	Length (mm)	Max Qty	Size C (mm)
230VAC/20W	600	35	optional
230VAC/36W	1200	19	optional
230VAC/48W	1500	14	optional

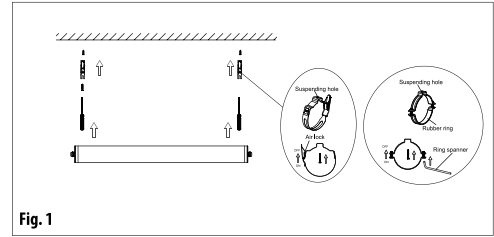


Fig. 1

## 1 Ceiling Mounted

- A : Make a right position and screw hole
- B : Screw the clip on the ceiling tightly
- C : Install the lamp into the clips.
- D : Adjust the position of the fixture and clean it..

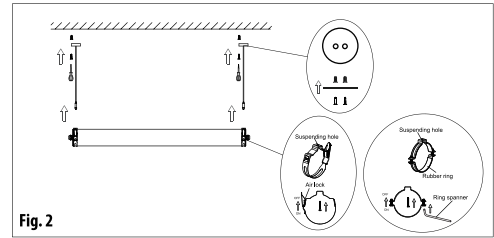
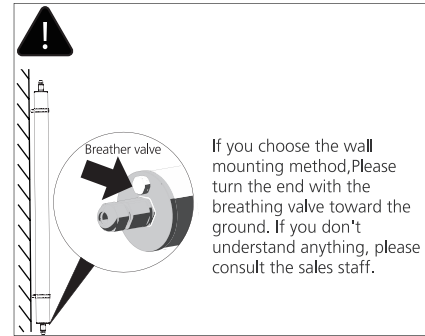


Fig. 2

## 2 Suspending

- A : Make a right position and screw hole
- B : Screw the steel cable onto the ceiling
- C : Hung the fixture under the steel cable and secure the fixture by steel cable
- D : Adjust the position of the fixture and clean it..



- Please Note:All the operations must be in the condition of power off
- The luminaires are intended for indoor use. If you don't understand anything, please consult the sales staff.

# 3. Accessory part number matrix



Accessories	IMAGE	DESIGNATION	MATERIAL	DESCRIPTION	QUANTITY	ACCESSORY USE
Standard	01	Metal Bracket	Stainless steel	82X78X20mm	2PCS	Used of Suspending and ceiling mounted.
Standard	02	Screw	Stainless steel	4X20mm	2PCS	Used of ceiling mounted.
Optional	03	Suspending Cable	Stainless steel	1M/1.2M/1.5M/3M	2PCS	Used of suspending.
Optional	04	Anti-theft clips	Stainless steel	95X80X13mm	2PCS	Used of Suspending and ceiling mounted.
Optional	05	Ring spanner	Stainless steel	T20	1PCS	Used of Anti-theft clips installation.