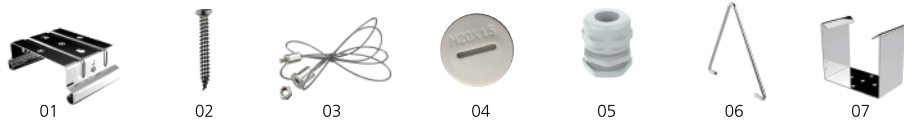
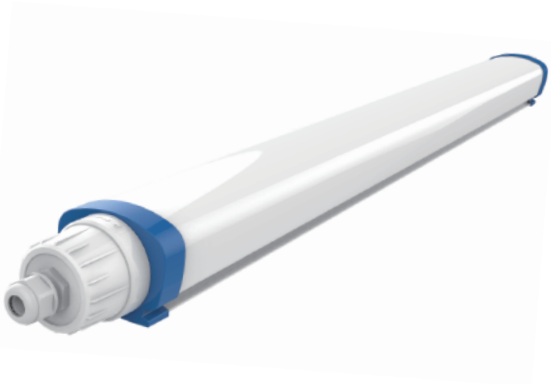


4. Accessory



Accessories	IMAGE	DESIGNITION	MATERIAL	QUANTITY	ACCESSORY USE
Standard	01	Ceiling Mounting Bracket	Stainless steel	2PCS	For ceiling mounting and suspension using
Standard	02	Screw	Stainless steel	4PCS	For ceiling mounting using
Optional	03	Suspension Cable	Stainless steel	2PCS	For suspension using
Optional	04	Waterproof Rubber Plug	PC	1PCS	For through-wiring using
Optional	05	M20 Connector	PC	1PCS	For through-wiring using
Optional	06	Wire Bracket	Stainless steel	2PCS	For wire suspension using
Optional	07	Track Bracket	Stainless steel	2PCS	For track suspension using

Tool-Free Installation LED Luminaire Manual



Matters needing attention

- Before installing the lighting fixtures, please read this instruction manual carefully.
- The lighting fixtures should be installed, connected and tested by a certified installer based on the local regulations.
- Lamps should always be installed or replaced with care.
- Please check the local voltage in accordance with the product requirements before using the product.
- Relamping only can be done when the power is off and the lamp is completely cooled down.
- When a lamp is to be cleaned, make the power off and let it cool down completely.Clean the fixture with a soft cloth and a standard PH neutral detergent, Stainless steel finishing should be maintained regularly.
- Misuse of, or changes to the fixture shall nullify the guarantee.
- Don't cover the fixtures with flammable materials.
- Exclusively replaced by the manufacturer or his service agent or the similar qualified person in order to avoid a hazard.

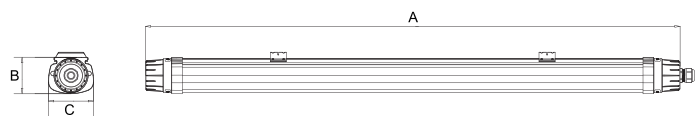
Temperature Characteristics T-ambient 25°C

- Temperature
- Operating -20~+40 C
- Storage -40~+85 C

Electrical Characteristics

- Input Voltage:
- EU: AC220-240V 50/60Hz
- US: AC100-277V 50/60Hz
- PF:≥0.93 THD<20%
- Power Efficiency:≥0.9

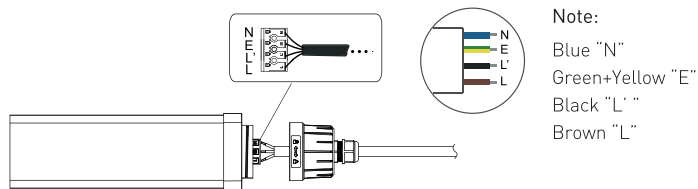
1.Product Dimension



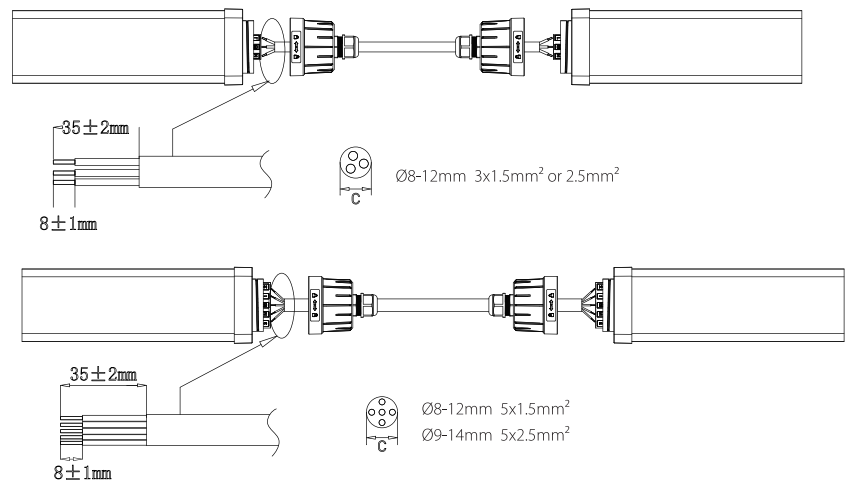
Size A(mm)	Size B(mm)	Size C(mm)
2FT(600mm)	68	84
3FT(900mm)	68	84
4FT(1200mm)	68	84
5FT(1500mm)	68	84

2.Wiring

- Standard



- Through-wiring

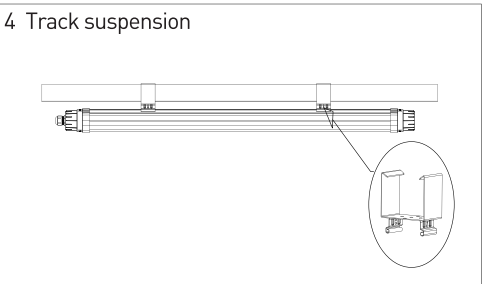
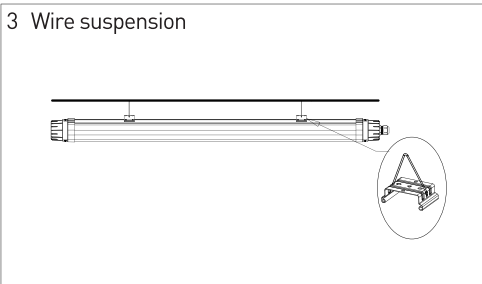
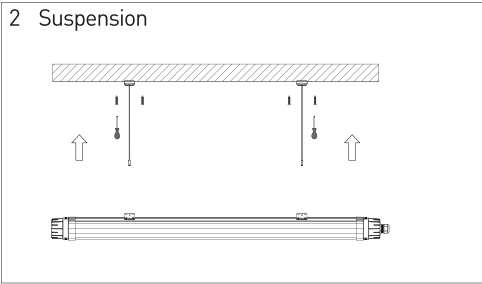
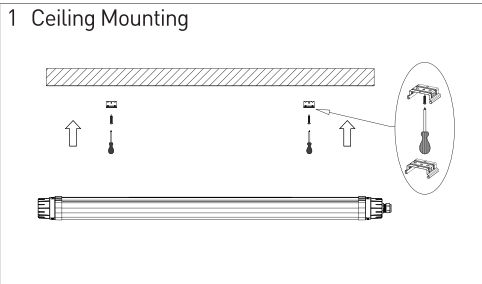


- How many luminaires can be connected ?

Input Voltage	Length (mm)	Max Qty	Size C (mm)
100VAC/20W	600	16	optional
100VAC/30W	900	11	optional
100VAC/40W	1200	8	optional
100VAC/50W	1500	6	optional
100VAC/65W	1500	5	optional

Input Voltage	Length (mm)	Max Qty	Size C (mm)
230VAC/20W	600	32	optional
230VAC/30W	900	22	optional
230VAC/40W	1200	16	optional
230VAC/50W	1500	13	optional
230VAC/65W	1500	10	optional

3.Installation



- Please Note:All the operations must be in the condition of power off
- The luminaires are intended for indoor use. If you don't understand anything, please consult the sales staff.