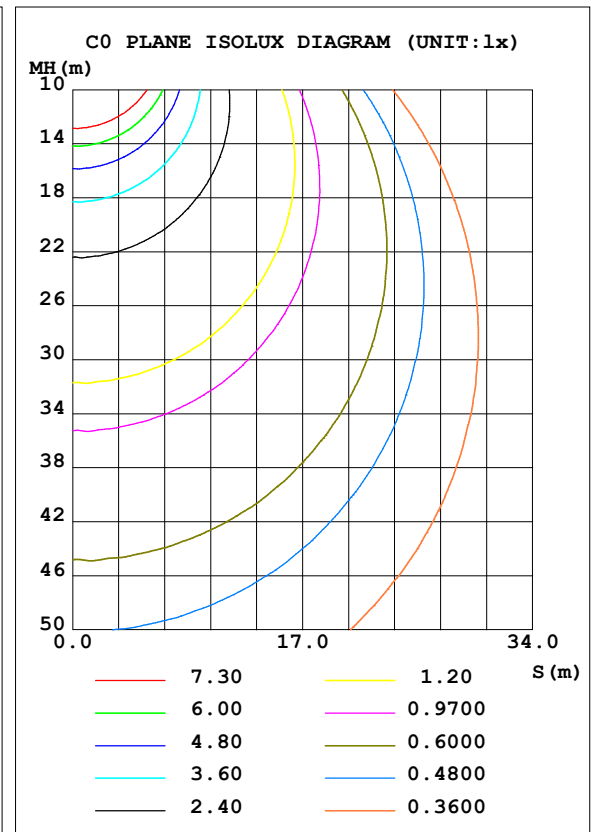
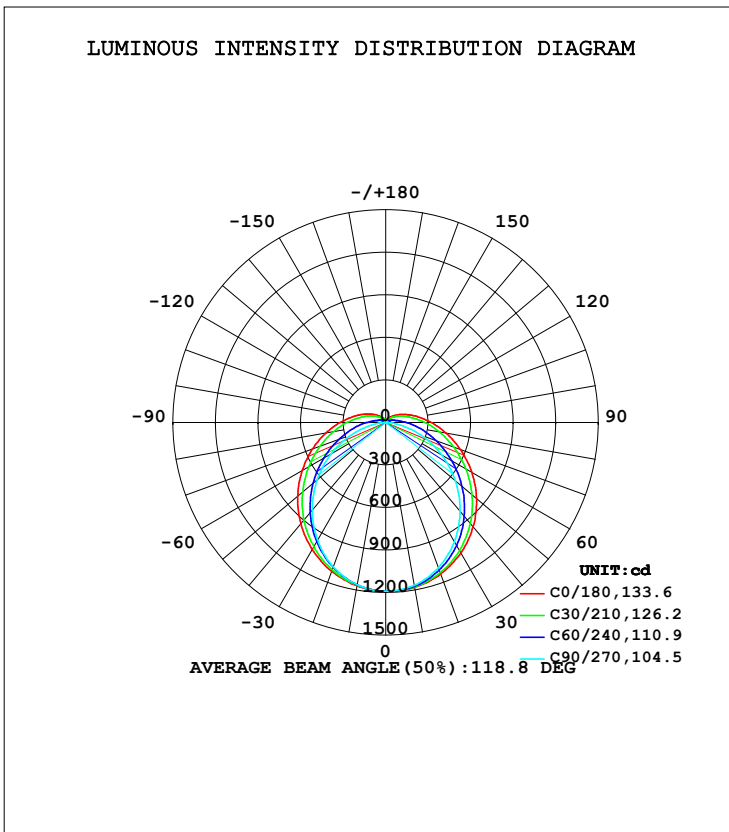


LUMINAIRE PHOTOMETRIC TEST REPORT

Test:U:230.4V I:0.1510A P:33.08W PF:0.9505 Freq:50.00Hz Lamp Flux:4308.44x1 lm		
NAME: T60	TYPE:T603650K1200-2242835R8-2016GH1.25	
SPEC.:	DIM.:	SERIAL No.:
MFR.: ERVAN	SUR.:	Shielding Angle:

DATA OF LAMP		PHOTOMETRIC DATA Eff: 130.25 lm/W			
MODEL		I _{max} (cd)	1196	S/MH (C0/180)	1.30
NOMINAL POWER (W)	36	LOR (%)	100.0	S/MH (C90/270)	1.21
RATED VOLTAGE (V)	230	TOTAL FLUX (lm)	4308.4	η UP, DN (C0-180)	5.1, 44.6
NOMINAL FLUX (lm)	4308.44	CIE CLASS	SEMI-D.	η UP, DN (C180-360)	5.4, 44.8
LAMPS INSIDE	1	η up (%)	10.6	CIBSE SHR NOM	1.25
TEST VOLTAGE (V)	230	η down (%)	89.4	CIBSE SHR MAX	1.35



C Range: 0 - 360DEG
 C Interval: 15.0DEG
 Test Speed: HIGH
 Temperature: 25.3DEG
 Operators: QC
 Test Date: 25 November 2016

γ Range: 0 - 180DEG
 γ Interval: 1.0DEG
 Test System: EVERFINE GO-2000A_V1 SYSTEM V2.0.362
 Humidity: 65.0%
 Test Distance: 10.500m [K=1.0000]
 Remarks:

ZONAL FLUX DIAGRAM

ZONAL FLUX DIAGRAM:

γ	C0	C45	C90	C135	C180	C225	C270	C315	γ	Φ zone	Φ total	%lum, lamp
10	1180	1174	1166	1162	1170	1164	1162	1176	0- 10	112.6	112.6	2.61,2.61
20	1137	1117	1090	1093	1116	1096	1083	1118	10- 20	322.5	435.1	10.1,10.1
30	1063	1021	970.4	989.0	1035	993.1	960.7	1024	20- 30	488.8	923.9	21.4,21.4
40	959.8	895.1	817.1	856.1	931.1	863.3	806.7	897.9	30- 40	591.8	1516	35.2,35.2
50	836.8	750.1	642.5	708.9	810.7	717.4	631.0	752.0	40- 50	622.5	2138	49.6,49.6
60	701.0	597.4	456.3	558.1	680.3	569.4	445.4	599.7	50- 60	585.0	2723	63.2,63.2
70	562.5	451.5	268.3	417.1	549.9	429.6	257.5	453.5	60- 70	494.5	3218	74.7,74.7
80	432.6	322.1	95.64	295.6	427.9	309.6	88.36	325.6	70- 80	375.6	3593	83.4,83.4
90	322.0	219.7	1.608	200.8	322.3	214.3	2.754	222.8	80- 90	259.2	3852	89.4,89.4
100	233.6	144.5	2.465	131.7	237.3	143.5	3.902	147.0	90-100	172.9	4025	93.4,93.4
110	164.8	92.89	3.747	84.77	170.7	94.86	5.418	92.05	100-110	113.4	4139	96.1,96.1
120	112.8	58.41	5.218	54.52	119.2	62.61	7.028	56.80	110-120	72.02	4211	97.7,97.7
130	74.35	33.05	6.759	35.89	80.44	42.23	8.679	35.93	120-130	43.80	4255	98.7,98.7
140	47.28	20.77	8.377	24.96	52.38	29.60	10.21	23.89	130-140	25.57	4280	99.3,99.3
150	29.62	15.33	10.38	18.51	33.43	22.09	11.92	17.83	140-150	14.57	4295	99.7,99.7
160	19.82	13.90	12.34	15.59	21.75	17.65	13.37	15.36	150-160	8.155	4303	99.9,99.9
170	14.96	13.76	13.85	14.73	15.44	15.48	14.42	14.07	160-170	4.273	4307	100,100
180	13.01	14.66	14.74	14.62	13.01	14.59	14.81	14.67	170-180	1.367	4308	100,100
DEG	LUMINOUS INTENSITY:cd									UNIT:lm		

Conical surface Flux(90deg): 1827.6 lm

%lum = 42.4%
 %lamp = 42.4%

Conical surface Flux(120deg): 2723.1 lm

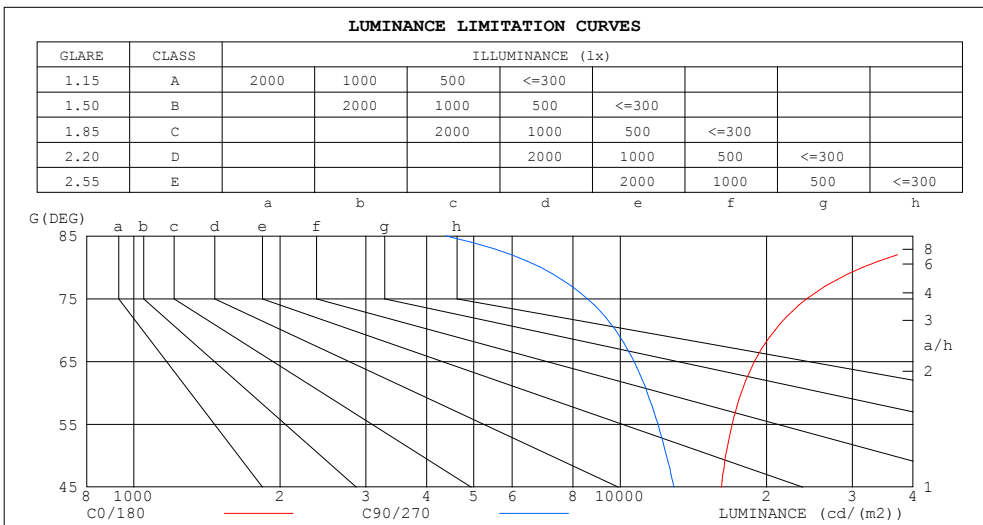
%lum = 63.2%
 %lamp = 63.2%

C Range: 0 - 360DEG
 C Interval: 15.0DEG
 Test Speed: HIGH
 Temperature:25.3DEG
 Operators:QC
 Test Date:25 November 2016

γ Range: 0 - 180DEG
 γ Interval: 1.0DEG
 Test System:EVERFINE GO-2000A_V1 SYSTEM V2.0.362
 Humidity:65.0%
 Test Distance:10.500m [K=1.0000]
 Remarks:

LUMINANCE LIMITATION CURVES

Test:U:230.4V I:0.1510A P:33.08W PF:0.9505 Freq:50.00Hz Lamp Flux:4308.44x1 lm		
NAME: T60	TYPE:T603650K1200-2242835R8-2016H1.25	
SPEC.:	DIM.:	SERIAL No.:
MFR.: ERVAN	SUR.:	Shielding Angle:



LUMINANCE cd/(m2)		
G (DEG)	C0/180	C90/270
85	54359	4376
80	31539	6863
75	24211	8550
70	20823	9775
65	18879	10678
60	17752	11370
55	17004	11958
50	16483	12453
45	16141	12901

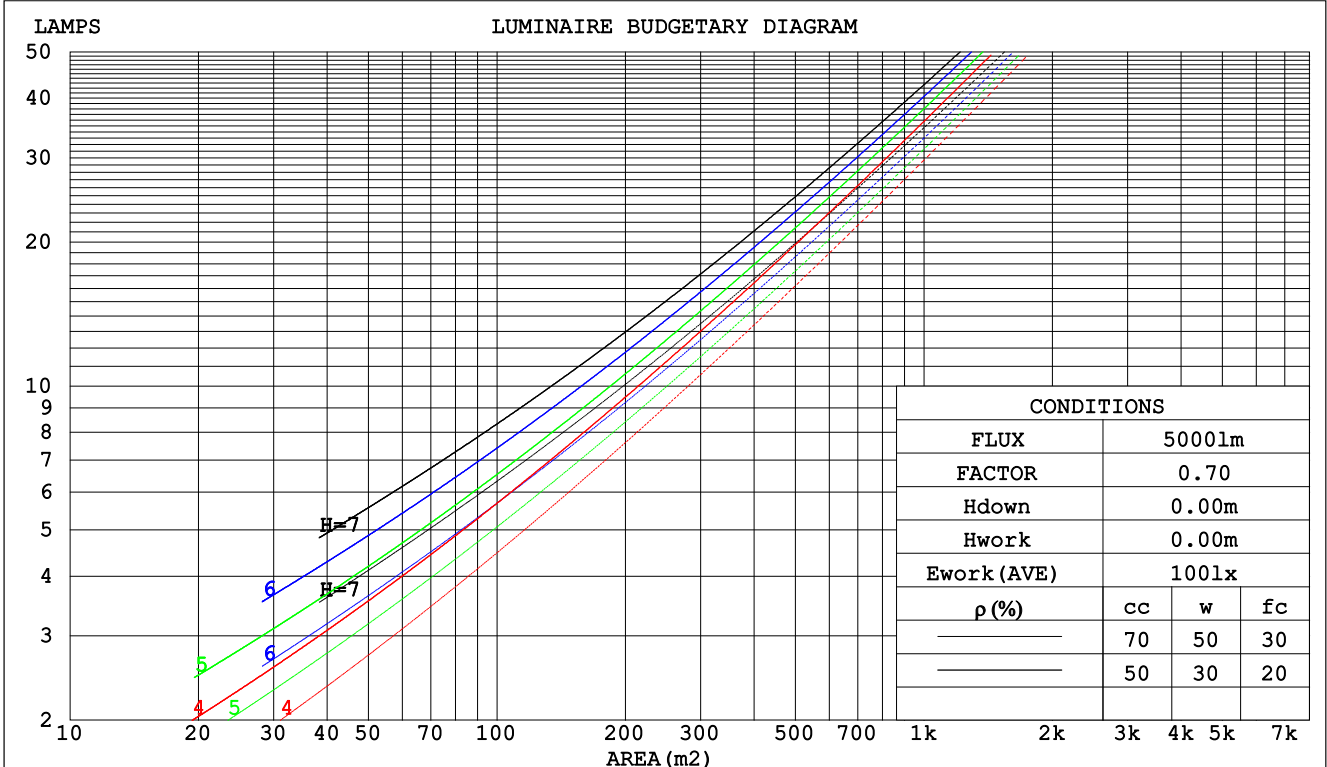
C Range: 0 - 360DEG
 C Interval: 15.0DEG
 Test Speed: HIGH
 Temperature:25.3DEG
 Operators:QC
 Test Date:25 November 2016

γ Range: 0 - 180DEG
 γ Interval: 1.0DEG
 Test System:EVERFINE GO-2000A_V1 SYSTEM V2.0.362
 Humidity:65.0%
 Test Distance:10.500m [K=1.0000]
 Remarks:

CU AND LUMINAIRE BUDGETARY ESTIMATE DIAGRAM

Test:U:230.4V I:0.1510A P:33.08W PF:0.9505 Freq:50.00Hz Lamp Flux:4308.44x1 lm		
NAME: T60	TYPE:T603650K1200-2242835R8-2016HML:25	
SPEC.:	DIM.:	SERIAL No.:
MFR.: ERVAN	SUR.:	Shielding Angle:

ρcc	80%			70%			50%			30%			10%			0
ρw	50%	30%	10%	50%	30%	10%	50%	30%	10%	50%	30%	10%	50%	30%	10%	0
ρfc	20%			20%			20%			20%			20%			0
RCR	RCR:Room Cavity Ratio															
	Coefficients of Utilization(CU)															
0.0	1.17	1.17	1.17	1.13	1.13	1.13	1.05	1.05	1.05	.99	.99	.99	.92	.92	.92	.89
1.0	.99	.94	.89	.95	.91	.87	.89	.85	.82	.83	.80	.77	.78	.75	.73	.70
2.0	.85	.77	.71	.82	.75	.69	.77	.71	.66	.72	.67	.63	.67	.63	.60	.57
3.0	.74	.65	.58	.72	.64	.57	.67	.60	.55	.63	.57	.52	.59	.54	.50	.47
4.0	.65	.56	.49	.63	.55	.48	.59	.52	.46	.56	.49	.44	.52	.47	.43	.40
5.0	.58	.49	.42	.56	.48	.41	.53	.45	.40	.50	.43	.38	.47	.41	.37	.34
6.0	.52	.43	.36	.51	.42	.36	.48	.40	.35	.45	.38	.33	.43	.37	.32	.30
7.0	.47	.38	.32	.46	.37	.31	.43	.36	.30	.41	.34	.30	.39	.33	.29	.26
8.0	.43	.34	.28	.42	.34	.28	.40	.32	.27	.38	.31	.26	.36	.30	.26	.23
9.0	.39	.31	.25	.38	.30	.25	.36	.29	.24	.35	.28	.24	.33	.27	.23	.21
10.0	.36	.28	.23	.35	.28	.23	.34	.27	.22	.32	.26	.21	.30	.25	.21	.19



C Range: 0 - 360DEG
 C Interval: 15.0DEG
 Test Speed: HIGH
 Temperature:25.3DEG
 Operators:QC
 Test Date:25 November 2016

γ Range: 0 - 180DEG
 γ Interval: 1.0DEG
 Test System:EVERFINE GO-2000A_V1 SYSTEM V2.0.362
 Humidity:65.0%
 Test Distance:10.500m [K=1.0000]
 Remarks:

WEC AND CCEC

Test:U:230.4V I:0.1510A P:33.08W PF:0.9505 Freq:50.00Hz Lamp Flux:4308.44x1 lm		
NAME: T60	TYPE:T603650K1200-2242835R8-2016GH1.25	HEIGHT: 2.5
SPEC.:	DIM.:	SERIAL No.:
MFR.: ERVAN	SUR.:	Shielding Angle:

pcc	80%			70%			50%			30%			10%			0
pw	50%	30%	10%	50%	30%	10%	50%	30%	10%	50%	30%	10%	50%	30%	10%	0
pfc	20%			20%			20%			20%			20%			0
RCR	RCR:Room Cavity Ratio						Wall Exitance Coefficients(WEC)									
0.0																
1.0	.363	.206	.065	.352	.201	.064	.333	.191	.061	.315	.182	.058	.298	.173	.056	
2.0	.320	.176	.054	.311	.171	.053	.294	.163	.051	.277	.156	.049	.262	.148	.047	
3.0	.288	.153	.046	.279	.150	.045	.264	.143	.043	.249	.136	.042	.235	.130	.040	
4.0	.261	.136	.040	.253	.133	.039	.239	.127	.038	.226	.121	.037	.214	.116	.035	
5.0	.238	.121	.035	.231	.119	.035	.219	.114	.034	.207	.109	.032	.196	.105	.031	
6.0	.219	.110	.031	.213	.108	.031	.201	.103	.030	.191	.099	.029	.180	.095	.028	
7.0	.203	.100	.028	.197	.098	.028	.187	.094	.027	.177	.091	.026	.167	.087	.026	
8.0	.188	.092	.026	.183	.090	.026	.174	.087	.025	.165	.083	.024	.156	.080	.023	
9.0	.176	.085	.024	.171	.083	.023	.162	.080	.023	.154	.077	.022	.146	.074	.021	
10.0	.165	.079	.022	.161	.078	.022	.153	.075	.021	.145	.072	.020	.138	.069	.020	

pcc	80%			70%			50%			30%			10%			0
pw	50%	30%	10%	50%	30%	10%	50%	30%	10%	50%	30%	10%	50%	30%	10%	0
pfc	20%			20%			20%			20%			20%			0
RCR	RCR:Room Cavity Ratio						Ceiling Cavity Exitance Coefficients(CCEC)									
0.0	.271	.271	.271	.232	.232	.232	.158	.158	.158	.091	.091	.091	.029	.029	.029	
1.0	.265	.237	.211	.227	.203	.182	.155	.140	.126	.089	.081	.073	.029	.026	.024	
2.0	.258	.214	.176	.221	.184	.152	.151	.127	.106	.087	.074	.062	.028	.024	.020	
3.0	.250	.197	.154	.214	.170	.134	.147	.118	.094	.085	.069	.055	.027	.022	.018	
4.0	.242	.184	.139	.208	.159	.121	.143	.111	.085	.083	.065	.050	.027	.021	.017	
5.0	.235	.174	.129	.202	.150	.112	.139	.105	.079	.080	.062	.047	.026	.020	.015	
6.0	.227	.166	.122	.195	.144	.106	.135	.100	.075	.078	.059	.045	.025	.019	.015	
7.0	.220	.159	.116	.189	.138	.101	.131	.097	.072	.076	.057	.043	.025	.019	.014	
8.0	.214	.153	.112	.184	.133	.098	.127	.093	.069	.074	.055	.041	.024	.018	.014	
9.0	.207	.148	.109	.179	.129	.095	.124	.091	.067	.072	.053	.040	.023	.018	.013	
10.0	.202	.144	.106	.174	.125	.093	.121	.088	.066	.070	.052	.039	.023	.017	.013	

C Range: 0 - 360DEG
 C Interval: 15.0DEG
 Test Speed: HIGH
 Temperature:25.3DEG
 Operators:QC
 Test Date:25 November 2016

γ Range: 0 - 180DEG
 γ Interval: 1.0DEG
 Test System:EVERFINE GO-2000A_V1 SYSTEM V2.0.362
 Humidity:65.0%
 Test Distance:10.500m [K=1.0000]
 Remarks:

UGR(Unified Glare Rating) Table

Test:U:230.4V I:0.1510A P:33.08W PF:0.9505 Freq:50.00Hz Lamp Flux:4308.44x1 lm										
NAME: T60					TYPE:T603650K1200-2242835R8-2013HML.25					
SPEC.:					DIM.:			SERIAL No.:		
MFR.: ERVAN					SUR.:			Shielding Angle:		
ceiling/cavity	0.7	0.7	0.5	0.5	0.3	0.7	0.7	0.5	0.5	0.3
walls	0.5	0.3	0.5	0.3	0.3	0.5	0.3	0.5	0.3	0.3
working plane	0.2	0.2	0.2	0.2	0.2	0.2	0.2	0.2	0.2	0.2
Room dimensions	Viewed crosswise					Viewed endwise				
x = 2H y = 2H	17.3	18.8	17.8	19.2	19.6	15.5	17.0	15.9	17.4	17.8
3H	19.7	21.0	20.1	21.4	21.9	16.9	18.2	17.3	18.6	19.1
4H	20.9	22.2	21.4	22.6	23.1	17.4	18.7	17.9	19.1	19.6
6H	22.3	23.5	22.8	23.9	24.4	17.7	18.9	18.2	19.4	19.9
8H	23.0	24.2	23.5	24.6	25.1	17.8	19.0	18.3	19.5	20.0
12H	23.9	25.0	24.4	25.4	26.0	17.9	19.0	18.4	19.4	20.0
4H 2H	17.9	19.1	18.3	19.6	20.0	16.5	17.8	17.0	18.2	18.7
3H	20.4	21.6	20.9	22.0	22.6	18.1	19.3	18.7	19.7	20.3
4H	21.9	22.9	22.4	23.4	24.0	18.9	19.9	19.4	20.4	20.9
6H	23.5	24.4	24.0	24.9	25.5	19.4	20.3	19.9	20.8	21.4
8H	24.3	25.2	24.9	25.7	26.4	19.5	20.4	20.1	20.9	21.5
12H	25.3	26.1	25.9	26.7	27.3	19.6	20.4	20.2	21.0	21.6
8H 4H	22.2	23.0	22.8	23.6	24.2	19.7	20.6	20.3	21.1	21.7
6H	24.1	24.8	24.7	25.4	26.0	20.6	21.3	21.2	21.9	22.6
8H	25.1	25.8	25.8	26.4	27.1	21.0	21.6	21.6	22.2	22.9
12H	26.4	27.0	27.0	27.6	28.3	21.2	21.8	21.9	22.4	23.1
12H 4H	22.2	23.0	22.8	23.6	24.2	20.0	20.8	20.6	21.3	22.0
6H	24.2	24.8	24.8	25.4	26.1	21.1	21.7	21.7	22.3	23.0
8H	25.4	25.9	26.0	26.5	27.2	21.6	22.2	22.2	22.8	23.5
Variations with the observer position at spacings:										
S = 1.0H	+ 0.1 / - 0.1					+ 0.1 / - 0.2				
1.5H	+ 0.2 / - 0.3					+ 0.2 / - 0.3				
2.0H	+ 0.2 / - 0.3					+ 0.2 / - 0.4				

CIE Pub.117, 4308 lm Total Lamp Luminous Flux Correct (8log(F/F0) = 5.1)

C Range: 0 - 360DEG
 C Interval: 15.0DEG
 Test Speed: HIGH
 Temperature:25.3DEG
 Operators:QC
 Test Date:25 November 2016

γ Range: 0 - 180DEG
 γ Interval: 1.0DEG
 Test System:EVERFINE GO-2000A_V1 SYSTEM V2.0.362
 Humidity:65.0%
 Test Distance:10.500m [K=1.0000]
 Remarks:

UTILIZATION FACTORS TABLE

Test:U:230.4V I:0.1510A P:33.08W PF:0.9505 Freq:50.00Hz Lamp Flux:4308.44x1 lm		
NAME: T60	TYPE:T603650K1200-2242835R8-2016GH1.25	WEIGHT: 1.25
SPEC.:	DIM.:	SERIAL No.:
MFR.: ERVAN	SUR.:	Shielding Angle:

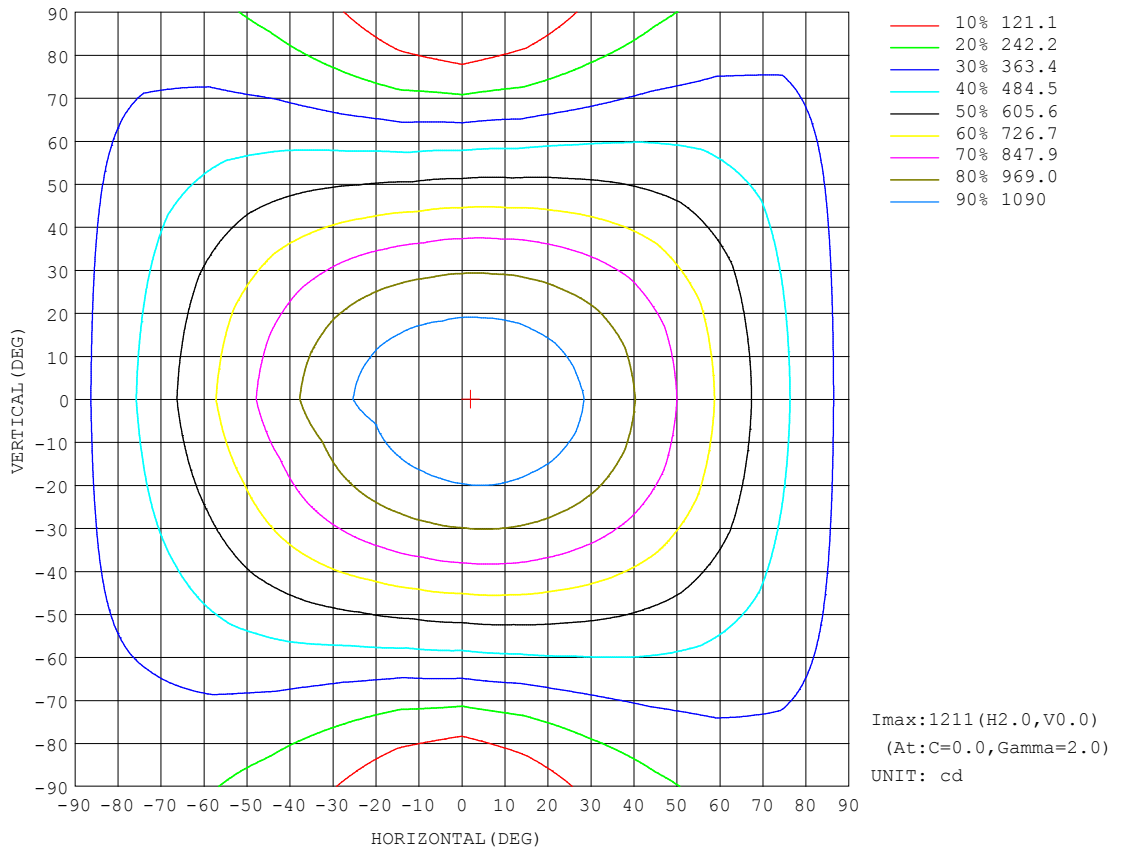
REFLECTANCE										
Ceiling	0.8	0.8	0.8	0.7	0.7	0.7	0.5	0.5	0.5	0
Walls	0.7	0.5	0.3	0.7	0.5	0.3	0.7	0.5	0.3	0
Working plane	0.2	0.2	0.2	0.2	0.2	0.2	0.2	0.2	0.2	0
ROOM INDEX	UTILIZATION FACTORS (PERCENT) $k(RI) \times RCR = 5$									
k = 0.60	52	40	32	51	39	32	49	39	32	25
0.80	61	49	41	60	48	41	58	47	40	33
1.00	69	57	49	67	56	48	64	57	48	39
1.25	76	64	56	74	63	55	70	61	54	46
1.50	81	70	62	79	68	61	75	66	59	50
2.00	88	78	70	86	76	69	81	73	67	57
2.50	92	83	76	89	81	74	84	77	71	61
3.00	96	87	81	93	85	79	87	81	76	64
4.00	100	93	87	97	91	85	91	86	81	69
5.00	103	97	92	100	94	89	93	89	85	72
ROOM INDEX	UF(total)									Direct
According to DIN EN 13032-2 2004			Suspended				SHRNOM = 1.25			

C Range: 0 - 360DEG
 C Interval: 15.0DEG
 Test Speed: HIGH
 Temperature:25.3DEG
 Operators:QC
 Test Date:25 November 2016

γ Range: 0 - 180DEG
 γ Interval: 1.0DEG
 Test System:EVERFINE GO-2000A_V1 SYSTEM V2.0.362
 Humidity:65.0%
 Test Distance:10.500m [K=1.0000]
 Remarks:

ISOCANDELA DIAGRAM

Test:U:230.4V I:0.1510A P:33.08W PF:0.9505 Freq:50.00Hz Lamp Flux:4308.44x1 lm		
NAME: T60	TYPE:T603650K1200-2242835R8-20160101	
SPEC.:	DIM.:	SERIAL No.:
MFR.: ERVAN	SUR.:	Shielding Angle:

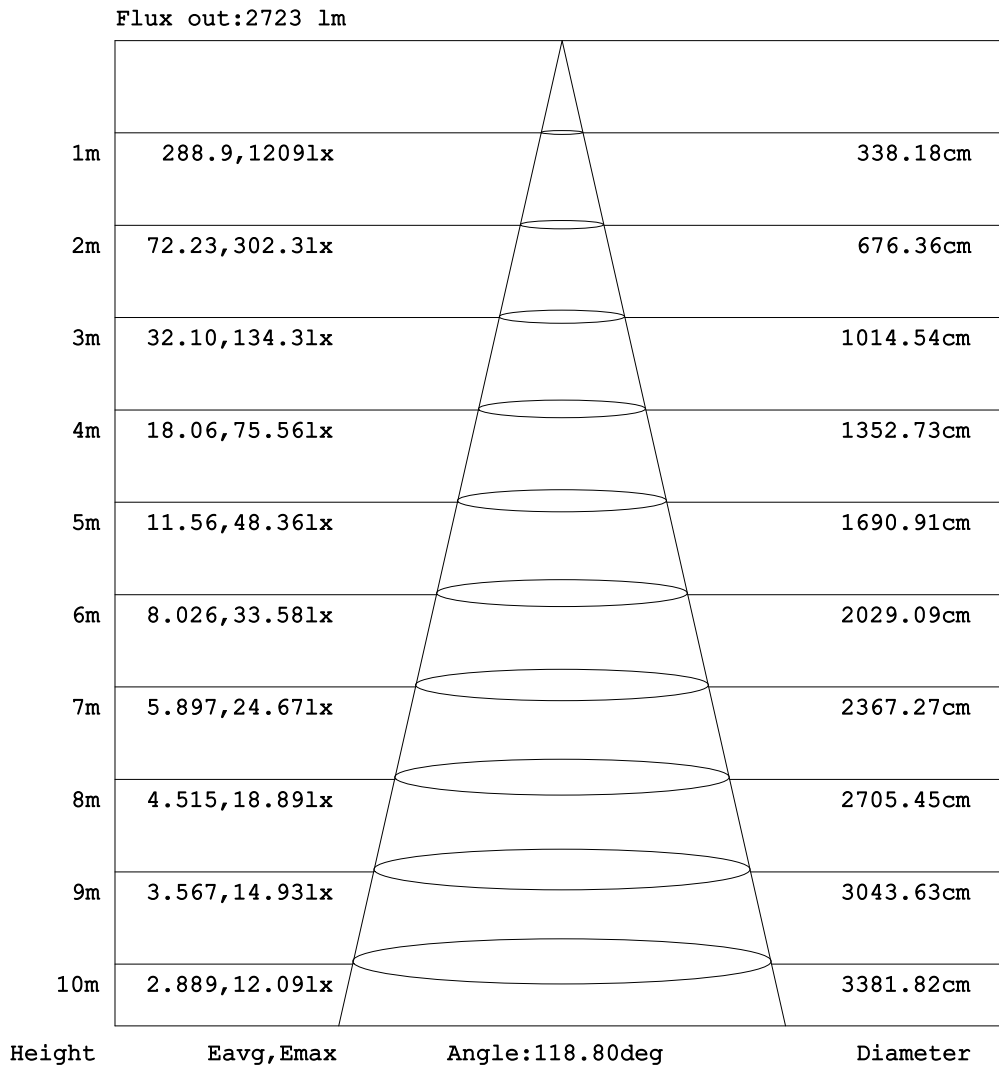


C Range: 0 - 360DEG
 C Interval: 15.0DEG
 Test Speed: HIGH
 Temperature:25.3DEG
 Operators:QC
 Test Date:25 November 2016

γ Range: 0 - 180DEG
 γ Interval: 1.0DEG
 Test System:EVERFINE GO-2000A_V1 SYSTEM V2.0.362
 Humidity:65.0%
 Test Distance:10.500m [K=1.0000]
 Remarks:

AAI Figure

Test:U:230.4V I:0.1510A P:33.08W PF:0.9505 Freq:50.00Hz Lamp Flux:4308.44x1 lm		
NAME: T60	TYPE:T603650K1200-2242835R8-2016	HEIGHT: 25
SPEC.:	DIM.:	SERIAL No.:
MFR.: ERVAN	SUR.:	Shielding Angle:



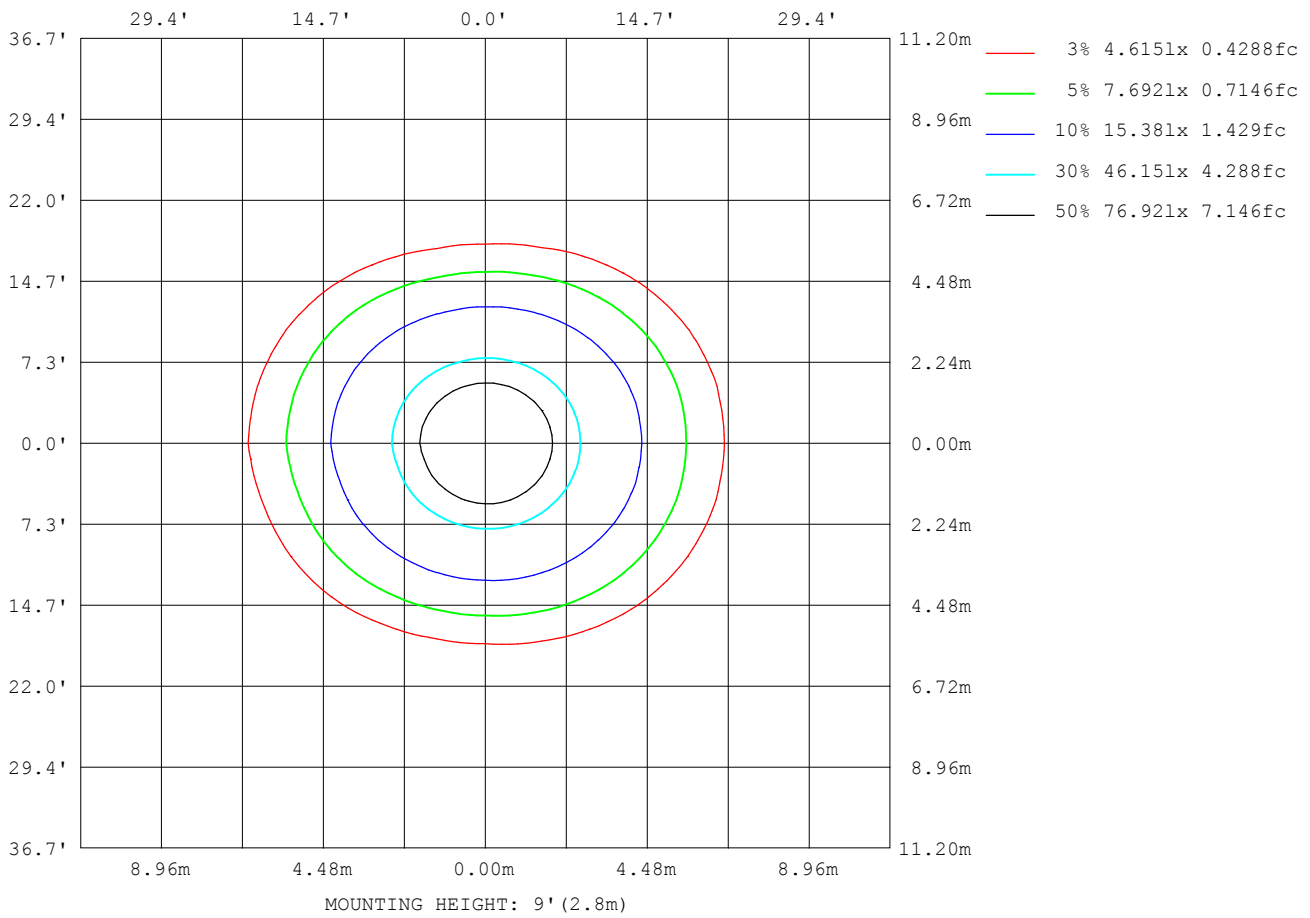
Note:The Curves indicate the illuminated area and the average illumination when the luminaire is at different distance.

C Range: 0 - 360DEG
 C Interval: 15.0DEG
 Test Speed: HIGH
 Temperature:25.3DEG
 Operators:QC
 Test Date:25 November 2016

γ Range: 0 - 180DEG
 γ Interval: 1.0DEG
 Test System:EVERFINE GO-2000A_V1 SYSTEM V2.0.362
 Humidity:65.0%
 Test Distance:10.500m [K=1.0000]
 Remarks:

ISOLUX DIAGRAM

Test:U:230.4V I:0.1510A P:33.08W PF:0.9505 Freq:50.00Hz Lamp Flux:4308.44x1 lm		
NAME: T60	TYPE:T603650K1200-2242835R8-2013H1.25	
SPEC.:	DIM.:	SERIAL No.:
MFR.: ERVAN	SUR.:	Shielding Angle:



C Range: 0 - 360DEG
 C Interval: 15.0DEG
 Test Speed: HIGH
 Temperature:25.3DEG
 Operators:QC
 Test Date:25 November 2016

γ Range: 0 - 180DEG
 γ Interval: 1.0DEG
 Test System:EVERFINE GO-2000A_V1 SYSTEM V2.0.362
 Humidity:65.0%
 Test Distance:10.500m [K=1.0000]
 Remarks:

LED Avg.L Report

Test:U:230.4V I:0.1510A P:33.08W PF:0.9505 Freq:50.00Hz Lamp Flux:4308.44x1 lm		
NAME: T60	TYPE:T603650K1200-2242835R8-2016GH1.25	
SPEC.:	DIM.:	SERIAL No.:
MFR.: ERVAN	SUR.:	Shielding Angle:

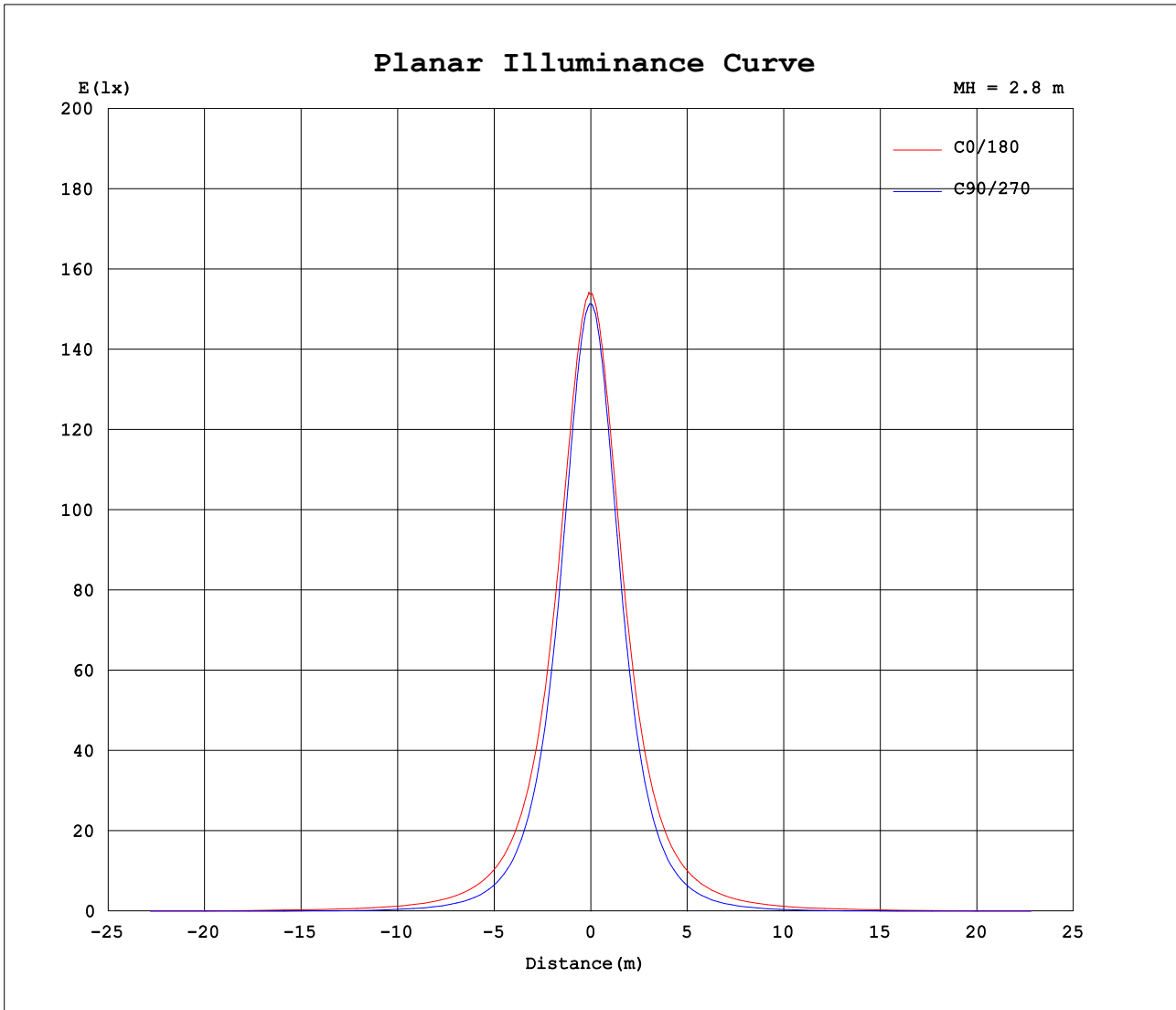
AvgL	cd/m2
L_0~180 (65) av	18407
L_0~180 (75) av	23712
L_0~180 (85) av	53531
L_90~270 (65) av	10535
L_90~270 (75) av	8358
L_90~270 (85) av	4107
L_45 (65) av	15015
L_45 (75) av	17987
L_45 (85) av	37383

Standard: GB/T 29293-2012

C Range: 0 - 360DEG
 C Interval: 15.0DEG
 Test Speed: HIGH
 Temperature:25.3DEG
 Operators:QC
 Test Date:25 November 2016

γ Range: 0 - 180DEG
 γ Interval: 1.0DEG
 Test System:EVERFINE GO-2000A_V1 SYSTEM V2.0.362
 Humidity:65.0%
 Test Distance:10.500m [K=1.0000]
 Remarks:

Planar Illuminance Curve



C Range: 0 - 360DEG
 C Interval: 15.0DEG
 Test Speed: HIGH
 Temperature: 25.3DEG
 Operators: QC
 Test Date: 25 November 2016

γ Range: 0 - 180DEG
 γ Interval: 1.0DEG
 Test System: EVERFINE GO-2000A_V1 SYSTEM V2.0.362
 Humidity: 65.0%
 Test Distance: 10.500m [K=1.0000]
 Remarks:

LUMINOUS DISTRIBUTION INTENSITY DATA

Test:U:230.4V I:0.1510A P:33.08W PF:0.9505 Freq:50.00Hz Lamp Flux:4308.44x1 lm		
NAME: T60	TYPE:T603650K1200-2242835R8-2013HML:25	
SPEC.:	DIM.:	SERIAL No.:
MFR.: ERVAN	SUR.:	Shielding Angle:

Table--1 UNIT: cd

C (DEG) γ (DEG)	0	15	30	45	60	75	90	105	120	135	150	165	180	195	210	225	240	255	270
0	1191	1191	1191	1191	1191	1191	1191	1191	1191	1191	1191	1191	1191	1191	1191	1191	1191	1191	1191
5	1192	1189	1189	1189	1188	1187	1185	1182	1182	1182	1181	1180	1184	1182	1183	1182	1183	1183	1184
10	1180	1178	1178	1174	1173	1171	1166	1163	1162	1162	1162	1162	1170	1166	1165	1164	1162	1160	1162
15	1163	1161	1157	1150	1146	1141	1133	1130	1128	1134	1134	1136	1147	1142	1140	1135	1129	1126	1129
20	1137	1135	1127	1117	1107	1100	1090	1087	1087	1093	1098	1102	1116	1111	1105	1096	1087	1082	1083
25	1102	1099	1089	1073	1060	1049	1035	1031	1034	1045	1053	1060	1079	1073	1064	1048	1033	1025	1027
30	1063	1057	1042	1021	1002	986	970	967	973	989	1002	1012	1035	1028	1013	993	973	959	961
35	1014	1008	990	962	935	915	898	895	905	925	944	960	986	976	959	930	903	886	887
40	960	953	928	895	863	838	817	816	829	856	880	902	931	920	898	863	829	807	807
45	901	893	863	825	785	754	732	732	750	784	816	840	874	859	833	791	750	722	720
50	837	827	795	750	703	667	642	645	667	709	747	775	811	796	766	717	669	634	631
55	770	760	724	673	620	578	550	554	584	633	676	708	747	731	696	643	587	545	538
60	701	689	652	597	537	488	456	464	502	558	606	642	680	665	628	569	505	454	445
65	630	620	580	523	456	396	362	373	422	486	538	575	615	599	560	497	427	366	350
70	562	551	512	451	380	310	268	287	347	417	473	512	550	534	494	430	351	282	257
75	495	485	445	383	309	229	178	208	279	353	410	450	487	472	432	367	285	205	168
80	433	422	383	322	245	158	95.6	139	219	296	354	391	428	413	373	310	226	138	88.4
85	374	363	328	268	191	101	30.6	84.3	168	245	302	339	372	359	321	259	176	86.1	26.7
90	322	311	277	220	146	60.5	1.61	46.5	126	201	256	291	322	310	273	214	135	50.4	2.75
95	275	265	233	179	110	35.6	1.93	25.5	93.5	163	216	248	277	266	231	176	103	30.1	3.24
100	234	224	194	145	82.7	22.6	2.46	16.1	69.9	132	179	211	237	226	195	144	78.8	19.9	3.90
105	197	188	160	116	62.4	16.0	3.07	11.6	52.6	106	149	178	202	192	163	117	60.6	15.0	4.64
110	165	157	132	92.9	47.3	12.7	3.75	9.61	40.2	84.8	123	149	171	161	136	94.9	47.4	12.6	5.42
115	137	130	108	74.2	36.1	10.7	4.46	8.83	31.6	67.9	101	124	143	135	112	77.0	38.0	11.6	6.21
120	113	107	87.8	58.4	27.6	9.56	5.22	8.69	25.6	54.5	82.0	102	119	112	92.3	62.6	31.3	11.3	7.03
125	92.1	87.2	70.7	43.1	21.5	9.21	5.98	8.72	21.5	44.1	66.5	83.2	98.4	92.2	75.6	51.3	26.5	11.3	7.86
130	74.4	70.5	55.1	33.1	17.6	9.21	6.76	9.00	18.8	35.9	53.8	67.4	80.4	75.2	61.6	42.2	23.1	11.4	8.68
135	59.5	56.4	41.3	25.7	15.2	9.40	7.56	9.62	16.9	29.6	43.4	54.2	65.1	60.9	50.1	35.1	20.7	11.7	9.46
140	47.3	45.0	31.1	20.8	13.8	9.70	8.38	10.2	15.5	25.0	35.1	43.4	52.4	49.0	40.8	29.6	18.9	12.3	10.2
145	37.4	35.5	24.1	17.5	12.9	10.2	9.35	10.8	14.4	21.4	28.6	34.6	41.8	39.2	33.3	25.3	17.5	12.7	11.1
150	29.6	26.4	19.4	15.3	12.6	10.9	10.4	11.4	13.9	18.5	23.7	27.7	33.4	31.6	27.6	22.1	16.4	13.1	11.9
155	23.9	20.1	16.4	14.2	12.8	11.6	11.4	12.2	14.1	16.4	19.9	22.6	27.0	25.7	23.1	19.6	15.5	13.6	12.7
160	19.8	16.3	14.5	13.9	13.0	12.4	12.3	12.9	14.1	15.6	16.9	18.6	21.7	21.4	19.8	17.7	15.1	14.0	13.4
165	17.0	14.1	13.5	13.7	13.2	13.2	13.2	13.5	14.2	15.1	15.7	16.2	18.1	18.2	17.4	16.4	14.9	14.3	13.9
170	15.0	12.7	13.3	13.8	13.8	13.8	13.8	14.0	14.4	14.7	14.9	15.1	15.4	16.2	16.1	15.5	14.9	14.6	14.4
175	12.7	12.9	13.9	14.2	14.3	14.4	14.4	14.4	14.5	14.6	14.4	14.4	13.1	14.9	15.1	14.9	14.8	14.8	14.7
180	13.0	14.3	14.7	14.7	14.7	14.8	14.7	14.8	14.7	14.6	14.3	14.0	13.0	14.2	14.7	14.6	14.7	14.8	14.8

C Range: 0 - 360DEG
 C Interval: 15.0DEG
 Test Speed: HIGH
 Temperature:25.3DEG
 Operators:QC
 Test Date:25 November 2016

γ Range: 0 - 180DEG
 γ Interval: 1.0DEG
 Test System:EVERFINE GO-2000A_V1 SYSTEM V2.0.362
 Humidity:65.0%
 Test Distance:10.500m [K=1.0000]
 Remarks:

LUMINOUS DISTRIBUTION INTENSITY DATA

Test:U:230.4V I:0.1510A P:33.08W PF:0.9505 Freq:50.00Hz Lamp Flux:4308.44x1 lm		
NAME: T60	TYPE:T603650K1200-2242835R8-2013H1.25	
SPEC.:	DIM.:	SERIAL No.:
MFR.: ERVAN	SUR.:	Shielding Angle:

Table--2

UNIT: cd

C (DEG) \ γ (DEG)	285	300	315	330	345														
0	1191	1191	1191	1191	1191														
5	1184	1186	1190	1190	1191														
10	1164	1170	1176	1180	1183														
15	1134	1142	1153	1162	1167														
20	1090	1103	1118	1133	1142														
25	1036	1055	1075	1096	1109														
30	973	996	1024	1051	1069														
35	901	929	964	998	1022														
40	823	857	898	939	967														
45	739	778	827	875	909														
50	651	696	752	808	843														
55	561	613	676	736	777														
60	471	530	600	664	707														
65	381	449	525	594	636														
70	295	371	453	523	567														
75	215	301	387	457	500														
80	144	239	326	393	436														
85	89.1	185	271	336	378														
90	51.4	141	223	285	324														
95	30.0	107	181	240	276														
100	19.7	80.5	147	201	234														
105	14.7	57.3	115	167	197														
110	12.6	44.5	92.0	134	165														
115	11.3	36.3	72.1	110	137														
120	10.8	28.6	56.8	88.2	110														
125	10.7	23.3	45.3	70.8	89.4														
130	10.9	19.8	35.9	54.6	72.4														
135	11.1	17.6	28.9	43.4	57.5														
140	11.4	16.0	23.9	34.0	45.7														
145	11.8	15.1	20.3	27.1	35.9														
150	12.3	14.6	17.8	22.1	27.9														
155	12.8	14.4	16.3	18.6	21.9														
160	13.4	14.1	15.4	16.2	17.9														
165	13.8	13.9	14.6	14.7	15.3														
170	14.3	14.2	14.1	13.8	13.8														
175	14.6	14.5	14.4	13.9	13.3														
180	14.8	14.8	14.7	14.4	14.1														

C Range: 0 - 360DEG
 C Interval: 15.0DEG
 Test Speed: HIGH
 Temperature:25.3DEG
 Operators:QC
 Test Date:25 November 2016

γ Range: 0 - 180DEG
 γ Interval: 1.0DEG
 Test System:EVERFINE GO-2000A_V1 SYSTEM V2.0.362
 Humidity:65.0%
 Test Distance:10.500m [K=1.0000]
 Remarks: