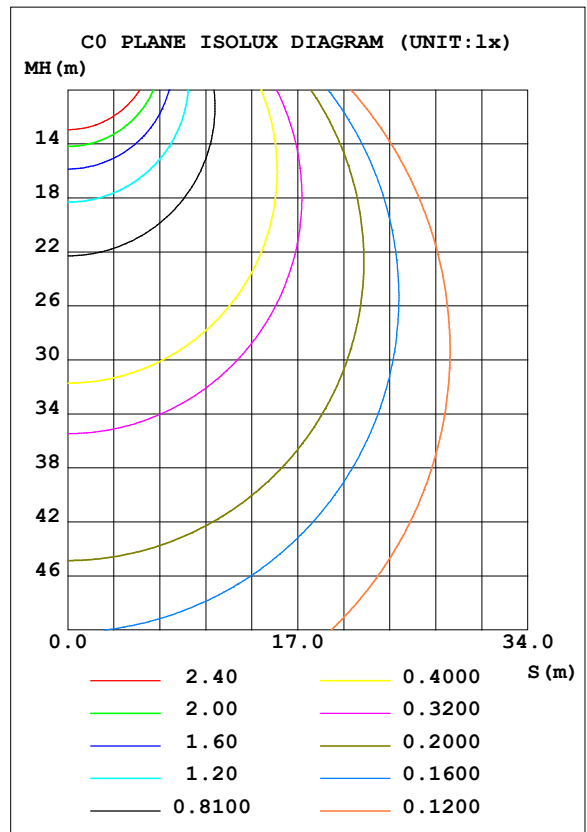
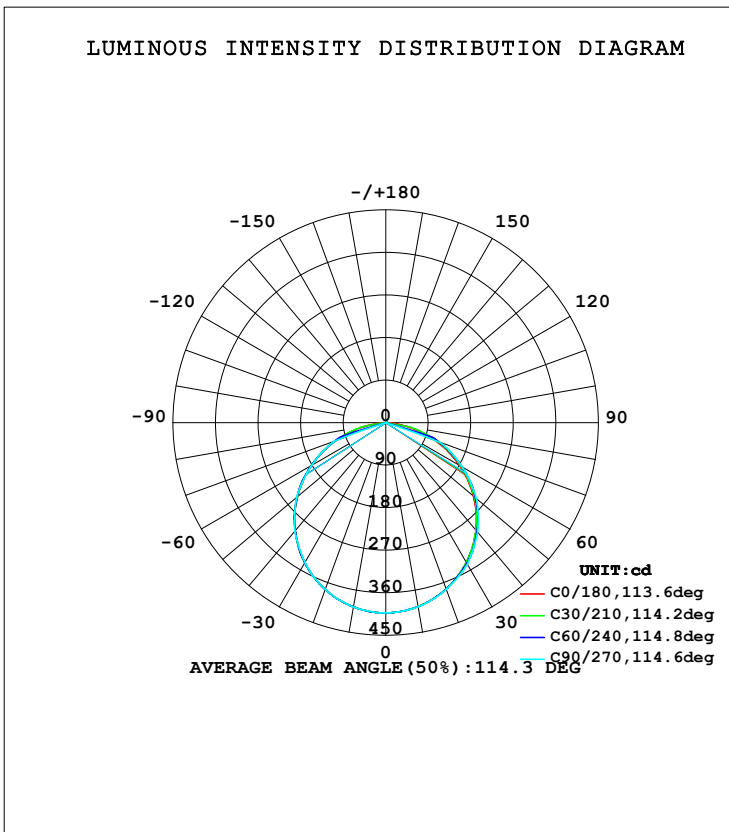


LUMINAIRE PHOTOMETRIC TEST REPORT

Test:U:230.4V I:0.0652A P:14.19W PF:0.9443 Lamp Flux:1125.48x1 lm		
NAME: PANEL	TYPE:PR03CO-15NL-R240-722835-WEIGHT:2.18	
SPEC.:	DIM.:	SERIAL No.:
MFR.: EVERFINE	SUR.:	PROTECTION ANGLE:

DATA OF LAMP		PHOTOMETRIC DATA Eff: 79.31 lm/W			
MODEL		I _{max} (cd)	402.5	S/MH (C0/180)	1.26
NOMINAL POWER (W)	14	LOR (%)	100.0	S/MH (C90/270)	1.27
RATED VOLTAGE (V)	232	TOTAL FLUX (lm)	1125.5	η UP, DN (C0-180)	0.0, 50.2
NOMINAL FLUX (lm)	1125.48	CIE CLASS	DIRECT	η UP, DN (C180-360)	0.0, 49.8
LAMPS INSIDE	1	η up (%)	0.0	CIBSE SHR NOM	1.25
TEST VOLTAGE (V)	231.0	η down (%)	100.0	CIBSE SHR MAX	1.35



C Range: 0 - 360DEG
 C Interval: 5.0DEG
 Test Speed: HIGH
 Temperature: 25.3DEG
 Operators: QC
 Test Date: 2015-12-19

γ Range: 0 - 90DEG
 γ Interval: 0.5DEG
 Test System: EVERFINE GO-2000A_V1 SYSTEM V2.0.281
 Humidity: 65.0%
 Test Distance: 10.500m [K=1.0000]
 Remarks:

ZONAL FLUX DIAGRAM

ZONAL FLUX DIAGRAM:

γ	C0	C45	C90	C135	C180	C225	C270	C315	γ	Φ zone	Φ total	%lum,lamp
5	400.6	400.4	400.5	400.6	400.8	400.8	400.8	400.7	0- 5	9.601	9.601	0.85,0.85
10	395.2	395.0	395.6	395.4	395.6	395.8	395.8	395.4	5- 10	28.48	38.08	3.38,3.38
15	386.3	386.3	386.6	386.9	387.2	387.4	387.1	386.7	10- 15	46.40	84.48	7.51,7.51
20	374.4	374.3	375.0	375.1	375.4	375.6	375.5	374.8	15- 20	62.78	147.3	13.1,13.1
25	359.2	359.3	361.1	360.3	360.4	360.9	360.2	359.6	20- 25	77.09	224.3	19.9,19.9
30	341.1	341.7	345.6	342.6	342.4	342.7	342.0	341.4	25- 30	88.90	313.2	27.8,27.8
35	320.0	322.0	324.1	323.2	321.7	322.2	320.7	320.5	30- 35	97.81	411.1	36.5,36.5
40	296.6	300.1	302.7	301.1	298.3	298.8	299.3	296.9	35- 40	103.5	514.6	45.7,45.7
45	270.5	273.7	276.5	274.9	272.3	272.1	272.8	270.4	40- 45	105.9	620.5	55.1,55.1
50	242.2	247.0	250.3	248.4	244.1	245.1	246.2	243.6	45- 50	104.8	725.3	64.4,64.4
55	211.8	216.7	218.4	217.8	213.7	214.5	213.7	213.0	50- 55	100.2	825.4	73.3,73.3
60	179.8	185.9	186.5	186.8	181.5	183.5	181.2	182.0	55- 60	92.00	917.4	81.5,81.5
65	146.2	151.4	154.6	152.5	148.0	148.7	148.7	147.3	60- 65	80.86	998.3	88.7,88.7
70	112.1	117.9	122.7	119.0	113.6	114.7	116.1	113.5	65- 70	67.35	1066	94.7,94.7
75	76.05	85.09	0	86.37	78.04	81.47	0	80.46	70- 75	40.41	1106	98.3,98.3
80	41.03	0	0	0	43.18	0	0	0	75- 80	15.32	1121	99.6,99.6
85	8.139	0	0	0	9.423	0	0	0	80- 85	3.940	1125	100,100
90	0.6423	0	0	0	0.3754	0	0	0	85- 90	0.1664	1125	100,100
95									90- 95			
100									95-100			
105									100-105			
110									105-110			
115									110-115			
120									115-120			
125									120-125			
130									125-130			
135									130-135			
140									135-140			
145									140-145			
150									145-150			
155									150-155			
160									155-160			
165									160-165			
170									165-170			
175									170-175			
180									175-180			
DEG	LUMINOUS INTENSITY:cd								UNIT:lm			

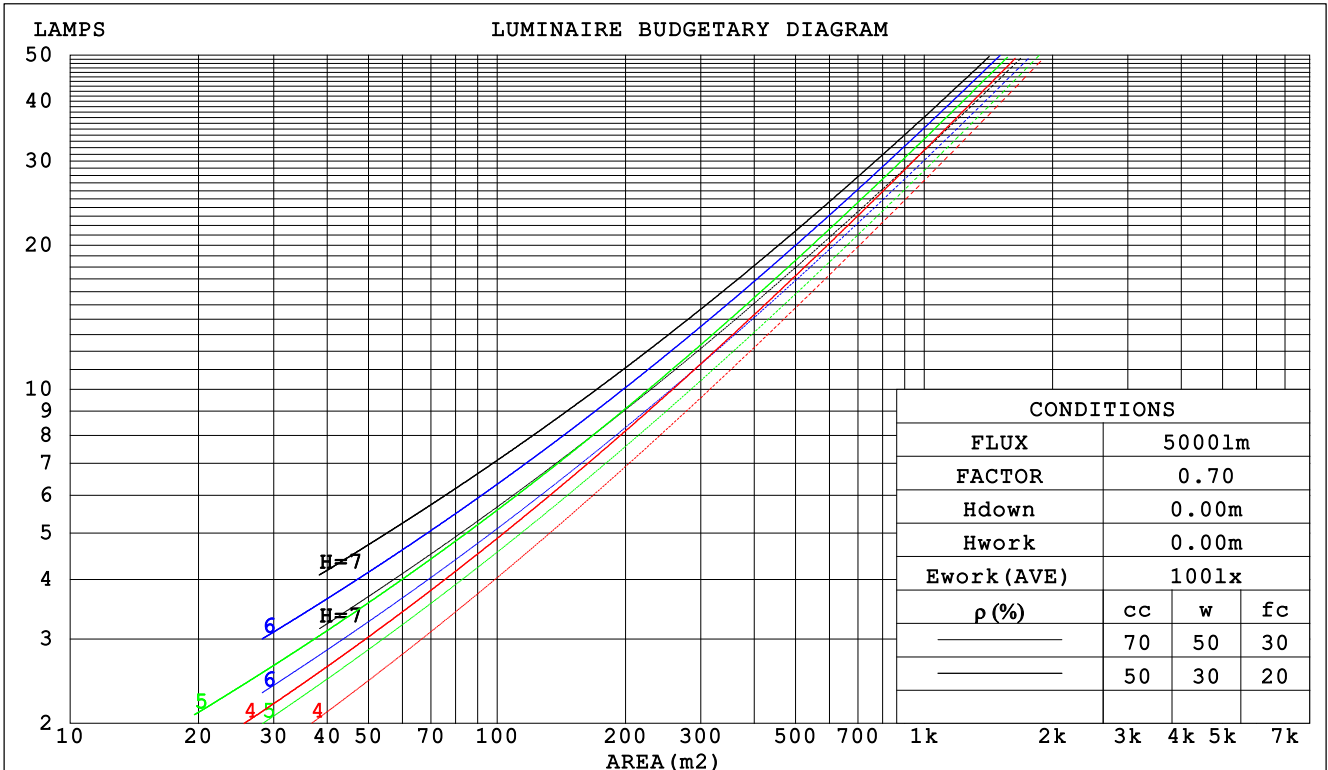
C Range: 0 - 360DEG
 C Interval: 5.0DEG
 Test Speed: HIGH
 Temperature:25.3DEG
 Operators:QC
 Test Date:2015-12-19

γ Range: 0 - 90DEG
 γ Interval: 0.5DEG
 Test System:EVERFINE GO-2000A_V1 SYSTEM V2.0.281
 Humidity:65.0%
 Test Distance:10.500m [K=1.0000]
 Remarks:

CU AND LUMINAIRE BUDGETARY ESTIMATE DIAGRAM

Test:U:230.4V I:0.0652A P:14.19W PF:0.9443 Lamp Flux:1125.48x1 lm		
NAME: PANEL	TYPE:PRO3CO-15NL-R240-722835-WEIGHT:2.18	
SPEC.:	DIM.:	SERIAL No.:
MFR.: EVERFINE	SUR.:	PROTECTION ANGLE:

ρcc	80%			70%			50%			30%			10%			0
ρw	50%	30%	10%	50%	30%	10%	50%	30%	10%	50%	30%	10%	50%	30%	10%	0
ρfc	20%			20%			20%			20%			20%			0
RCR	RCR:Room Cavity Ratio						Coefficients of Utilization(CU)									
0.0	1.19	1.19	1.19	1.16	1.16	1.16	1.11	1.11	1.11	1.06	1.06	1.06	1.02	1.02	1.02	1.00
1.0	1.05	1.01	.98	1.03	.99	.96	.99	.96	.93	.95	.92	.90	.91	.89	.87	.85
2.0	.92	.85	.80	.90	.84	.79	.86	.81	.77	.83	.79	.75	.80	.77	.74	.71
3.0	.81	.73	.66	.79	.72	.66	.76	.70	.65	.73	.68	.64	.71	.66	.62	.60
4.0	.71	.63	.56	.70	.62	.56	.68	.61	.55	.65	.59	.54	.63	.58	.54	.51
5.0	.64	.55	.48	.63	.54	.48	.61	.53	.48	.59	.52	.47	.57	.51	.46	.44
6.0	.57	.48	.42	.56	.48	.42	.55	.47	.42	.53	.46	.41	.51	.45	.41	.39
7.0	.52	.43	.37	.51	.43	.37	.50	.42	.37	.48	.41	.36	.47	.41	.36	.34
8.0	.47	.39	.33	.47	.39	.33	.45	.38	.33	.44	.37	.33	.43	.37	.32	.30
9.0	.43	.35	.30	.43	.35	.30	.42	.34	.29	.41	.34	.29	.40	.34	.29	.27
10.0	.40	.32	.27	.40	.32	.27	.39	.32	.27	.38	.31	.27	.37	.31	.26	.25



C Range: 0 - 360DEG
 C Interval: 5.0DEG
 Test Speed: HIGH
 Temperature:25.3DEG
 Operators:QC
 Test Date:2015-12-19

γ Range: 0 - 90DEG
 γ Interval: 0.5DEG
 Test System:EVERFINE GO-2000A_V1 SYSTEM V2.0.281
 Humidity:65.0%
 Test Distance:10.500m [K=1.0000]
 Remarks:

WEC AND CCEC

Test:U:230.4V I:0.0652A P:14.19W PF:0.9443 Lamp Flux:1125.48x1 lm		
NAME: PANEL	TYPE:PRO3CO-15NL-R240-722835-WEIGHT2.18	
SPEC.:	DIM.:	SERIAL No.:
MFR.: EVERFINE	SUR.:	PROTECTION ANGLE:

ρcc	80%			70%			50%			30%			10%			0
ρw	50%	30%	10%	50%	30%	10%	50%	30%	10%	50%	30%	10%	50%	30%	10%	0
ρfc	20%			20%			20%			20%			20%			0
RCR	RCR:Room Cavity Ratio						Wall Exitance Coefficients (WEC)									
0.0																
1.0	.287	.163	.052	.280	.159	.051	.266	.153	.049	.254	.147	.047	.243	.141	.045	
2.0	.278	.152	.047	.272	.150	.046	.260	.145	.045	.250	.140	.044	.240	.136	.043	
3.0	.261	.139	.042	.256	.137	.041	.246	.133	.040	.236	.129	.040	.227	.126	.039	
4.0	.243	.127	.037	.239	.125	.037	.230	.122	.036	.221	.119	.036	.213	.116	.035	
5.0	.226	.115	.033	.222	.114	.033	.214	.111	.033	.207	.109	.032	.200	.107	.032	
6.0	.211	.106	.030	.207	.105	.030	.200	.102	.030	.193	.100	.029	.187	.098	.029	
7.0	.197	.097	.028	.193	.096	.027	.187	.094	.027	.181	.093	.027	.175	.091	.027	
8.0	.184	.090	.025	.181	.089	.025	.175	.088	.025	.170	.086	.025	.165	.085	.025	
9.0	.173	.084	.023	.170	.083	.023	.165	.082	.023	.160	.080	.023	.155	.079	.023	
10.0	.163	.078	.022	.160	.077	.022	.156	.076	.021	.151	.075	.021	.147	.074	.021	

ρcc	80%			70%			50%			30%			10%			0
ρw	50%	30%	10%	50%	30%	10%	50%	30%	10%	50%	30%	10%	50%	30%	10%	0
ρfc	20%			20%			20%			20%			20%			0
RCR	RCR:Room Cavity Ratio						Ceiling Cavity Exitance Coefficients (CCEC)									
0.0	.190	.190	.190	.163	.163	.163	.111	.111	.111	.064	.064	.064	.020	.020	.020	
1.0	.179	.156	.136	.153	.134	.117	.105	.092	.081	.060	.053	.047	.019	.017	.015	
2.0	.170	.132	.100	.146	.114	.086	.100	.079	.060	.058	.046	.035	.019	.015	.011	
3.0	.163	.114	.076	.140	.099	.065	.096	.068	.046	.055	.040	.027	.018	.013	.009	
4.0	.155	.101	.059	.133	.087	.051	.092	.061	.036	.053	.036	.021	.017	.012	.007	
5.0	.148	.090	.048	.127	.078	.042	.088	.055	.029	.051	.032	.017	.016	.010	.006	
6.0	.141	.082	.040	.121	.071	.034	.084	.050	.024	.049	.029	.014	.016	.010	.005	
7.0	.135	.075	.033	.116	.065	.029	.080	.046	.021	.046	.027	.012	.015	.009	.004	
8.0	.128	.069	.029	.110	.060	.025	.076	.042	.018	.044	.025	.011	.014	.008	.004	
9.0	.122	.064	.025	.105	.056	.022	.073	.039	.016	.043	.023	.009	.014	.008	.003	
10.0	.117	.060	.023	.101	.052	.020	.070	.037	.014	.041	.022	.008	.013	.007	.003	

C Range: 0 - 360DEG
 C Interval: 5.0DEG
 Test Speed: HIGH
 Temperature:25.3DEG
 Operators:QC
 Test Date:2015-12-19

γ Range: 0 - 90DEG
 γ Interval: 0.5DEG
 Test System:EVERFINE GO-2000A_V1 SYSTEM V2.0.281
 Humidity:65.0%
 Test Distance:10.500m [K=1.0000]
 Remarks:

Uncorrected UGR Table

Test:U:230.4V I:0.0652A P:14.19W PF:0.9443 Lamp Flux:1125.48x1 lm										
NAME: PANEL					TYPE:PRO3CO-15NL-R240-722835-WEIGHT2.18					
SPEC.:					DIM.:			SERIAL No.:		
MFR.: EVERFINE					SUR.:			PROTECTION ANGLE:		
ceiling/cavity	0.7	0.7	0.5	0.5	0.3	0.7	0.7	0.5	0.5	0.3
walls	0.5	0.3	0.5	0.3	0.3	0.5	0.3	0.5	0.3	0.3
working plane	0.2	0.2	0.2	0.2	0.2	0.2	0.2	0.2	0.2	0.2
Room dimensions	Viewed crosswise					Viewed endwise				
x = 2H y = 2H	13.1	14.6	13.4	14.8	15.0	13.3	14.8	13.6	15.0	15.2
3H	14.7	16.1	15.0	16.3	16.5	14.8	16.2	15.1	16.4	16.6
4H	15.3	16.6	15.6	16.8	17.1	14.7	16.0	15.0	16.2	16.5
6H	15.6	16.8	15.9	17.1	17.4	14.6	15.8	14.9	16.1	16.3
8H	15.7	16.9	16.0	17.2	17.4	14.5	15.7	14.8	16.0	16.3
12H	15.7	16.8	16.0	17.1	17.4	14.5	15.6	14.8	15.9	16.2
4H 2H	13.8	15.1	14.1	15.4	15.6	13.9	15.2	14.3	15.5	15.8
3H	15.5	16.7	15.9	17.0	17.3	15.6	16.7	15.9	17.0	17.3
4H	16.2	17.3	16.6	17.6	17.9	15.5	16.5	15.9	16.8	17.2
6H	16.7	17.6	17.1	18.0	18.4	15.4	16.3	15.8	16.7	17.0
8H	16.8	17.7	17.2	18.1	18.4	15.3	16.2	15.8	16.6	16.9
12H	16.9	17.6	17.3	18.0	18.4	15.3	16.1	15.7	16.5	16.9
8H 4H	16.4	17.3	16.8	17.6	18.0	15.6	16.5	16.1	16.9	17.2
6H	17.0	17.7	17.4	18.1	18.5	15.6	16.3	16.0	16.7	17.1
8H	17.1	17.7	17.6	18.2	18.6	15.5	16.1	16.0	16.6	17.0
12H	17.2	17.7	17.6	18.1	18.6	15.5	16.0	16.0	16.5	16.9
12H 4H	16.4	17.2	16.8	17.5	17.9	15.6	16.4	16.1	16.8	17.2
6H	16.9	17.6	17.4	18.0	18.4	15.6	16.2	16.0	16.6	17.0
8H	17.1	17.6	17.6	18.1	18.5	15.5	16.0	16.0	16.5	17.0
Variations with the observer position at spacings:										
S = 1.0H	+ 0.2 / - 0.3					+ 0.3 / - 0.4				
1.5H	+ 0.3 / - 0.5					+ 0.5 / - 0.7				
2.0H	+ 0.2 / - 0.5					+ 0.7 / - 1.3				

CIE Pub.117 Corrected 1125 lm Total Lamp Luminous Flux. (8log(F/F0) = 0.4)

C Range: 0 - 360DEG
 C Interval: 5.0DEG
 Test Speed: HIGH
 Temperature:25.3DEG
 Operators:QC
 Test Date:2015-12-19

γ Range: 0 - 90DEG
 γ Interval: 0.5DEG
 Test System:EVERFINE GO-2000A_V1 SYSTEM V2.0.281
 Humidity:65.0%
 Test Distance:10.500m [K=1.0000]
 Remarks:

UTILIZATION FACTORS TABLE

Test:U:230.4V I:0.0652A P:14.19W PF:0.9443 Lamp Flux:1125.48x1 lm		
NAME: PANEL	TYPE:PRO3CO-15NL-R240-722835-WEIGHT:2.18	
SPEC.:	DIM.:	SERIAL No.:
MFR.: EVERFINE	SUR.:	PROTECTION ANGLE:

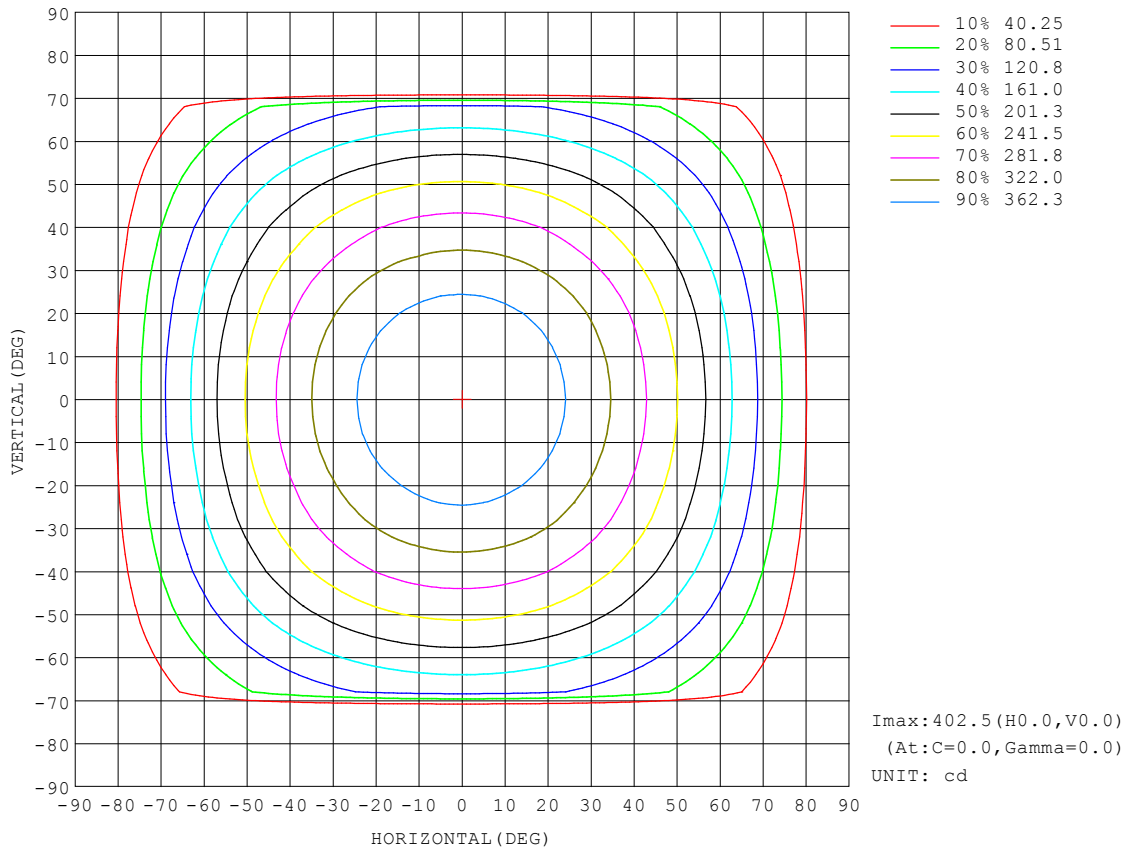
REFLECTANCE										
Ceiling	0.8	0.8	0.8	0.7	0.7	0.7	0.5	0.5	0.5	0
Walls	0.7	0.5	0.3	0.7	0.5	0.3	0.7	0.5	0.3	0
Working plane	0.2	0.2	0.2	0.2	0.2	0.2	0.2	0.2	0.2	0
ROOM INDEX	UTILIZATION FACTORS (PERCENT) $k(RI) \times RCR = 5$									
k = 0.60	58	46	40	57	46	39	56	46	39	33
0.80	68	57	49	67	56	49	65	56	49	42
1.00	77	66	59	76	65	59	73	67	58	51
1.25	84	74	67	83	73	67	80	72	66	59
1.50	89	80	73	88	79	72	85	77	71	64
2.00	96	88	82	94	87	81	91	85	79	72
2.50	100	93	87	98	91	86	94	89	84	76
3.00	103	97	92	101	95	91	97	92	88	80
4.00	107	102	98	105	100	96	101	97	94	85
5.00	110	105	101	107	103	100	103	100	97	88
ROOM INDEX	UF(total)									Direct
According to DIN EN 13032-2 2004			Suspended				SHRNOM = 1.25			

C Range: 0 - 360DEG
 C Interval: 5.0DEG
 Test Speed: HIGH
 Temperature:25.3DEG
 Operators:QC
 Test Date:2015-12-19

γ Range: 0 - 90DEG
 γ Interval: 0.5DEG
 Test System:EVERFINE GO-2000A_V1 SYSTEM V2.0.281
 Humidity:65.0%
 Test Distance:10.500m [K=1.0000]
 Remarks:

ISOCANDELA DIAGRAM

Test:U:230.4V I:0.0652A P:14.19W PF:0.9443 Lamp Flux:1125.48x1 lm		
NAME: PANEL	TYPE:PR03CO-15NL-R240-722835-001818T2.18	
SPEC.:	DIM.:	SERIAL No.:
MFR.: EVERFINE	SUR.:	PROTECTION ANGLE:

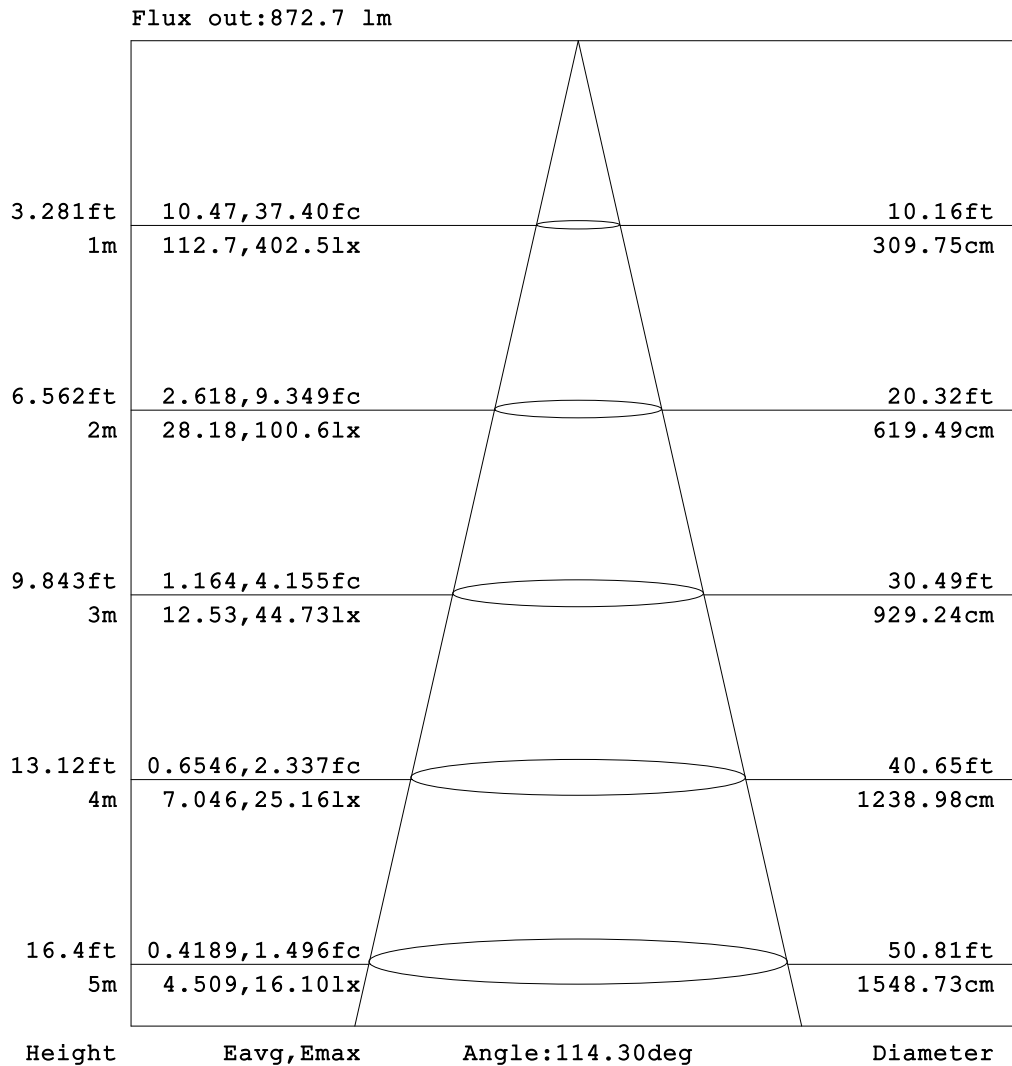


C Range: 0 - 360DEG
 C Interval: 5.0DEG
 Test Speed: HIGH
 Temperature: 25.3DEG
 Operators: QC
 Test Date: 2015-12-19

γ Range: 0 - 90DEG
 γ Interval: 0.5DEG
 Test System: EVERFINE GO-2000A_V1 SYSTEM V2.0.281
 Humidity: 65.0%
 Test Distance: 10.500m [K=1.0000]
 Remarks:

AAI Figure

Test:U:230.4V I:0.0652A P:14.19W PF:0.9443 Lamp Flux:1125.48x1 lm		
NAME: PANEL	TYPE:PR03CO-15NL-R240-722835-WEIGHT:2.18	
SPEC.:	DIM.:	SERIAL No.:
MFR.: EVERFINE	SUR.:	PROTECTION ANGLE:



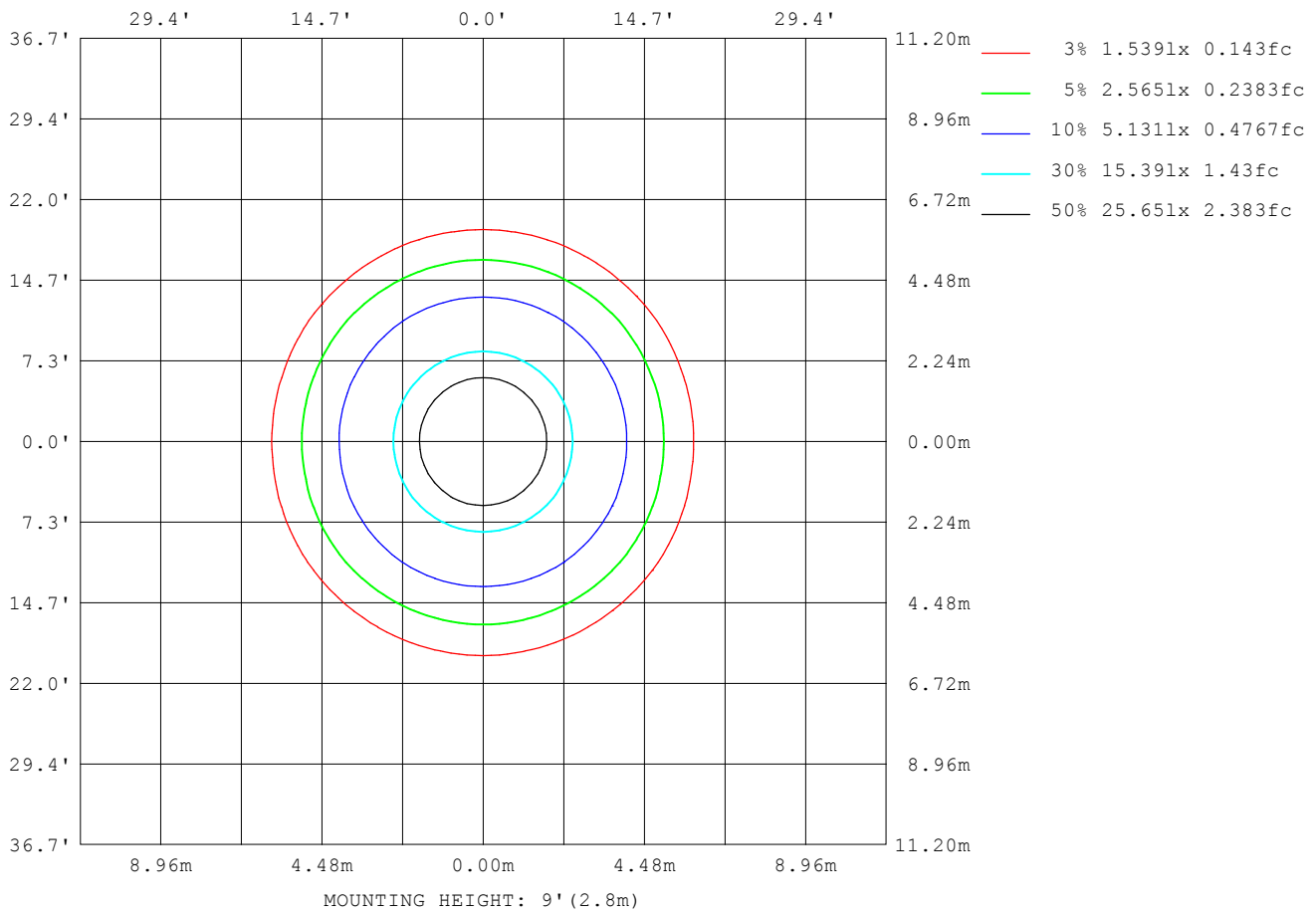
Note:The Curves indicate the illuminated area and the average illumination when the luminaire is at different distance.

C Range: 0 - 360DEG
 C Interval: 5.0DEG
 Test Speed: HIGH
 Temperature:25.3DEG
 Operators:QC
 Test Date:2015-12-19

γ Range: 0 - 90DEG
 γ Interval: 0.5DEG
 Test System:EVERFINE GO-2000A_V1 SYSTEM V2.0.281
 Humidity:65.0%
 Test Distance:10.500m [K=1.0000]
 Remarks:

ISOLUX DIAGRAM

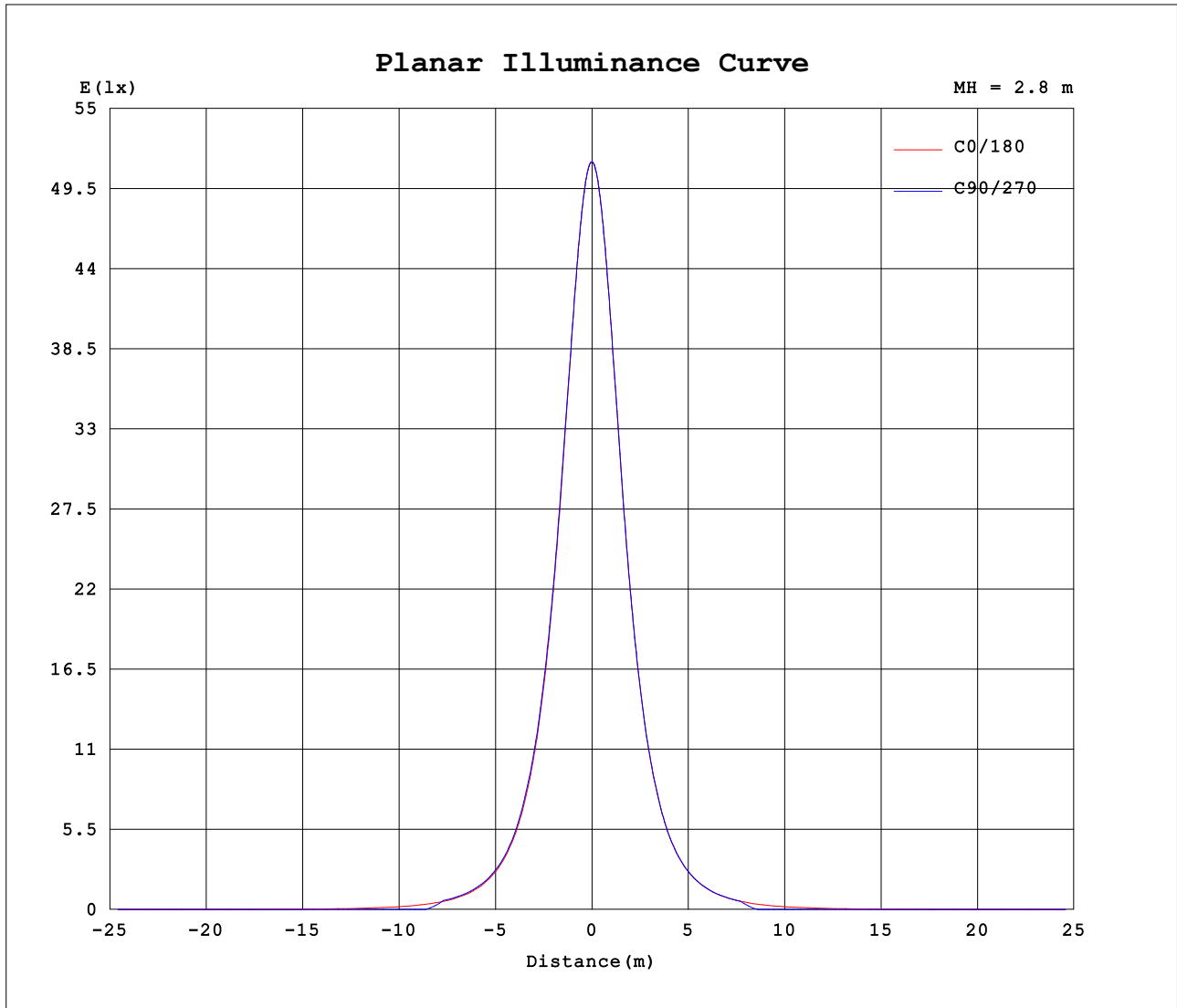
Test:U:230.4V I:0.0652A P:14.19W PF:0.9443 Lamp Flux:1125.48x1 lm		
NAME: PANEL	TYPE:PR03CO-15NL-R240-722835-WEIGHT:2.18	
SPEC.:	DIM.:	SERIAL No.:
MFR.: EVERFINE	SUR.:	PROTECTION ANGLE:



C Range: 0 - 360DEG
 C Interval: 5.0DEG
 Test Speed: HIGH
 Temperature:25.3DEG
 Operators:QC
 Test Date:2015-12-19

γ Range: 0 - 90DEG
 γ Interval: 0.5DEG
 Test System:EVERFINE GO-2000A_V1 SYSTEM V2.0.281
 Humidity:65.0%
 Test Distance:10.500m [K=1.0000]
 Remarks:

Planar Illuminance Curve



C Range: 0 - 360DEG
 C Interval: 5.0DEG
 Test Speed: HIGH
 Temperature: 25.3DEG
 Operators: QC
 Test Date: 2015-12-19

γ Range: 0 - 90DEG
 γ Interval: 0.5DEG
 Test System: EVERFINE GO-2000A_V1 SYSTEM V2.0.281
 Humidity: 65.0%
 Test Distance: 10.500m [K=1.0000]
 Remarks:

LUMINOUS DISTRIBUTION INTENSITY DATA

Test:U:230.4V I:0.0652A P:14.19W PF:0.9443 Lamp Flux:1125.48x1 lm		
NAME: PANEL	TYPE:PRO3CO-15NL-R240-722835-0018	
SPEC.:	DIM.:	SERIAL No.:
MFR.: EVERFINE	SUR.:	PROTECTION ANGLE:

Table--1

UNIT: cd

C (DEG) γ (DEG)	0	5	10	15	20	25	30	35	40	45	50	55	60	65	70	75	80	85	90
0	403	403	403	403	403	403	403	403	403	403	403	403	403	403	403	403	403	403	403
5	401	401	400	400	400	400	400	400	400	400	400	400	400	400	400	400	400	400	400
10	395	395	395	395	395	395	395	395	395	395	395	395	395	395	395	395	395	395	396
15	386	386	386	386	386	386	386	386	386	386	386	386	386	386	387	386	387	387	387
20	374	374	374	374	374	374	374	374	374	374	374	374	374	375	375	375	375	375	375
25	359	359	359	359	359	359	359	359	359	359	360	360	360	360	360	361	361	361	361
30	341	341	341	341	341	341	341	341	341	342	342	343	343	344	344	345	345	346	346
35	320	320	320	320	320	320	320	321	321	322	323	324	324	324	324	324	324	324	324
40	297	296	296	296	297	297	297	298	299	300	300	300	300	301	301	302	302	303	303
45	271	270	271	270	271	271	272	274	274	274	275	276	276	276	276	276	276	276	277
50	242	242	242	242	243	244	245	245	246	247	247	247	248	248	249	250	250	250	250
55	212	212	212	212	213	215	215	216	216	217	218	219	219	219	218	218	218	218	218
60	180	180	180	180	182	182	183	184	185	186	186	186	186	186	186	186	186	186	187
65	146	146	147	148	148	149	150	151	151	151	152	152	153	153	154	154	154	155	155
70	112	112	113	114	115	116	116	116	117	118	119	119	120	121	121	122	122	123	123
75	76.1	76.0	77.4	78.4	79.9	80.4	81.2	82.4	83.9	85.1	57.4	5.49	0.00	0.00	0.00	0.00	0.00	0.00	0.00
80	41.0	41.3	42.7	43.6	44.9	46.6	35.6	0.00	0.00	0.00	0.00	0.00	0.00	0.00	0.00	0.00	0.00	0.00	0.00
85	8.14	9.02	10.5	4.61	0.00	0.00	0.00	0.00	0.00	0.00	0.00	0.00	0.00	0.00	0.00	0.00	0.00	0.00	0.00
90	0.64	0.00	0.00	0.00	0.00	0.00	0.00	0.00	0.00	0.00	0.00	0.00	0.00	0.00	0.00	0.00	0.00	0.00	0.00

C Range: 0 - 360DEG	γ Range: 0 - 90DEG
C Interval: 5.0DEG	γ Interval: 0.5DEG
Test Speed: HIGH	Test System:EVERFINE GO-2000A_V1 SYSTEM V2.0.281
Temperature:25.3DEG	Humidity:65.0%
Operators:QC	Test Distance:10.500m [K=1.0000]
Test Date:2015-12-19	Remarks:

LUMINOUS DISTRIBUTION INTENSITY DATA

Test:U:230.4V I:0.0652A P:14.19W PF:0.9443 Lamp Flux:1125.48x1 lm		
NAME: PANEL	TYPE:PRO3CO-15NL-R240-722835-001SHT2.18	
SPEC.:	DIM.:	SERIAL No.:
MFR.: EVERFINE	SUR.:	PROTECTION ANGLE:

Table--2

UNIT: cd

C (DEG) \ γ (DEG)	95	100	105	110	115	120	125	130	135	140	145	150	155	160	165	170	175	180	185
0	403	403	403	403	403	403	403	403	403	403	403	403	403	403	403	403	403	403	403
5	400	400	401	401	401	401	401	401	401	401	401	401	401	401	401	401	401	401	401
10	395	395	395	395	395	396	395	395	395	395	395	395	396	396	396	396	396	396	396
15	387	387	387	387	387	387	387	387	387	387	387	387	387	387	387	387	387	387	387
20	375	375	375	375	375	375	375	375	375	375	375	375	375	375	375	375	375	375	376
25	361	361	361	361	361	360	360	360	360	360	360	360	360	360	360	360	360	360	361
30	346	345	345	345	344	344	344	343	343	342	342	342	342	342	343	342	342	342	343
35	324	324	324	324	324	325	325	324	323	323	322	322	322	322	322	322	322	322	322
40	303	303	302	302	302	301	301	301	301	300	300	299	298	298	298	298	298	298	298
45	277	277	277	277	277	277	277	276	275	275	275	274	273	272	272	272	272	272	272
50	250	250	250	249	249	249	248	248	248	247	246	247	246	244	244	244	244	244	244
55	219	219	219	219	219	219	219	218	218	217	217	216	216	215	214	214	214	214	214
60	187	187	187	186	186	186	186	186	187	186	185	185	184	184	182	182	182	181	182
65	155	155	154	154	154	153	153	153	152	152	153	152	151	150	150	148	148	148	148
70	123	123	122	122	122	121	120	120	119	118	118	117	117	116	115	115	114	114	114
75	0.00	0.00	0.00	0.00	0.00	0.00	5.55	58.1	86.4	85.3	84.2	82.9	82.0	81.6	80.6	79.5	78.6	78.0	78.5
80	0.00	0.00	0.00	0.00	0.00	0.00	0.00	0.00	0.00	0.00	0.00	0.00	37.1	48.5	46.7	45.5	44.9	43.2	43.5
85	0.00	0.00	0.00	0.00	0.00	0.00	0.00	0.00	0.00	0.00	0.00	0.00	0.00	0.00	5.03	11.5	10.3	9.42	9.79
90	0.00	0.00	0.00	0.00	0.00	0.00	0.00	0.00	0.00	0.00	0.00	0.00	0.00	0.00	0.00	0.00	0.00	0.38	0.00

C Range: 0 - 360DEG
 C Interval: 5.0DEG
 Test Speed: HIGH
 Temperature:25.3DEG
 Operators:QC
 Test Date:2015-12-19

γ Range: 0 - 90DEG
 γ Interval: 0.5DEG
 Test System:EVERFINE GO-2000A_V1 SYSTEM V2.0.281
 Humidity:65.0%
 Test Distance:10.500m [K=1.0000]
 Remarks:

LUMINOUS DISTRIBUTION INTENSITY DATA

Test:U:230.4V I:0.0652A P:14.19W PF:0.9443 Lamp Flux:1125.48x1 lm		
NAME: PANEL	TYPE:PRO3CO-15NL-R240-722835-0018	
SPEC.:	DIM.:	SERIAL No.:
MFR.: EVERFINE	SUR.:	PROTECTION ANGLE:

Table--3

UNIT: cd

C (DEG) \ y (DEG)	190	195	200	205	210	215	220	225	230	235	240	245	250	255	260	265	270	275	280
0	403	403	403	403	403	403	403	403	403	403	403	403	403	403	403	403	403	403	403
5	401	401	401	401	401	401	401	401	401	401	401	401	401	401	401	401	401	401	401
10	396	396	396	396	396	396	396	396	396	396	396	396	396	396	396	396	396	396	396
15	387	387	387	387	387	387	387	387	387	387	387	387	387	387	387	387	387	387	387
20	376	375	376	376	376	376	376	376	376	376	376	376	375	375	375	375	376	375	375
25	361	361	361	361	361	361	361	361	361	361	360	361	361	360	360	360	360	360	360
30	343	343	343	343	343	343	343	343	343	343	343	342	341	342	342	342	342	342	342
35	322	322	322	322	322	322	322	322	322	322	322	321	320	321	321	321	321	321	320
40	299	299	299	299	299	299	299	299	298	298	298	298	299	299	299	299	299	299	299
45	273	273	273	273	273	273	272	272	273	273	273	273	273	273	273	273	273	273	272
50	245	244	244	244	244	244	244	245	245	245	245	245	246	246	246	246	246	246	246
55	214	214	214	214	214	215	214	214	215	216	216	215	215	214	214	214	214	214	214
60	182	182	182	182	183	182	183	184	183	182	182	182	182	181	181	181	181	181	181
65	148	148	148	149	149	150	149	149	149	149	149	149	149	149	149	149	149	149	148
70	114	114	114	115	114	114	114	115	115	115	116	116	116	116	116	116	116	116	116
75	78.2	78.9	79.4	79.3	79.6	80.3	80.9	81.5	54.7	5.23	0.00	0.00	0.00	0.00	0.00	0.00	0.00	0.00	0.00
80	43.7	43.8	44.2	45.4	34.4	0.00	0.00	0.00	0.00	0.00	0.00	0.00	0.00	0.00	0.00	0.00	0.00	0.00	0.00
85	10.5	4.43	0.00	0.00	0.00	0.00	0.00	0.00	0.00	0.00	0.00	0.00	0.00	0.00	0.00	0.00	0.00	0.00	0.00
90	0.00	0.00	0.00	0.00	0.00	0.00	0.00	0.00	0.00	0.00	0.00	0.00	0.00	0.00	0.00	0.00	0.00	0.00	0.00

C Range: 0 - 360DEG
 C Interval: 5.0DEG
 Test Speed: HIGH
 Temperature:25.3DEG
 Operators:QC
 Test Date:2015-12-19

y Range: 0 - 90DEG
 y Interval: 0.5DEG
 Test System:EVERFINE GO-2000A_V1 SYSTEM V2.0.281
 Humidity:65.0%
 Test Distance:10.500m [K=1.0000]
 Remarks:

LUMINOUS DISTRIBUTION INTENSITY DATA

Test:U:230.4V I:0.0652A P:14.19W PF:0.9443 Lamp Flux:1125.48x1 lm		
NAME: PANEL	TYPE:PRO3CO-15NL-R240-722835-001812.18	
SPEC.:	DIM.:	SERIAL No.:
MFR.: EVERFINE	SUR.:	PROTECTION ANGLE:

Table--4

UNIT: cd

C (DEG) \ γ (DEG)	285	290	295	300	305	310	315	320	325	330	335	340	345	350	355				
0	403	403	403	403	403	403	403	403	403	403	403	403	403	403	403				
5	401	401	401	401	401	401	401	401	401	401	401	401	401	401	401				
10	396	396	396	395	395	395	395	395	395	395	395	395	395	395	395				
15	387	387	387	387	387	387	387	387	387	386	386	386	386	386	386				
20	375	375	375	375	375	375	375	375	375	375	375	374	374	374	374				
25	360	360	360	360	360	360	360	360	359	359	359	359	359	359	359				
30	342	342	342	342	342	342	341	342	341	341	341	341	341	341	341				
35	320	320	320	320	321	320	321	320	320	320	320	320	320	320	320				
40	298	298	297	297	297	297	297	297	297	297	297	297	297	296	296				
45	272	272	272	272	272	271	270	270	271	271	271	271	271	271	270				
50	245	245	244	244	243	243	244	243	242	242	242	242	242	242	242				
55	214	214	214	215	215	214	213	213	213	212	212	212	212	212	212				
60	181	181	181	181	181	181	182	181	181	181	180	180	180	180	180				
65	148	148	148	148	147	147	147	148	148	147	147	146	146	146	146				
70	116	115	115	115	114	114	113	113	113	113	113	112	112	112	112				
75	0.00	0.00	0.00	0.00	5.19	54.1	80.5	79.6	78.7	78.0	77.7	77.6	76.6	76.0	75.8				
80	0.00	0.00	0.00	0.00	0.00	0.00	0.00	0.00	0.00	33.1	43.5	42.4	41.8	41.3	40.9				
85	0.00	0.00	0.00	0.00	0.00	0.00	0.00	0.00	0.00	0.00	0.00	0.00	3.87	9.36	8.24				
90	0.00	0.00	0.00	0.00	0.00	0.00	0.00	0.00	0.00	0.00	0.00	0.00	0.00	0.00	0.00				

C Range: 0 - 360DEG
 C Interval: 5.0DEG
 Test Speed: HIGH
 Temperature:25.3DEG
 Operators:QC
 Test Date:2015-12-19

γ Range: 0 - 90DEG
 γ Interval: 0.5DEG
 Test System:EVERFINE GO-2000A_V1 SYSTEM V2.0.281
 Humidity:65.0%
 Test Distance:10.500m [K=1.0000]
 Remarks: